

For Research Use Only

CoraLite® Plus 488-conjugated PTPN6 Polyclonal antibody



Catalog Number:CL488-24546

Basic Information

Catalog Number: CL488-24546	GenBank Accession Number: BC002523	Purification Method: Antigen affinity purification
Size: 100ul , Concentration: 1000 µg/ml by Nanodrop;	GeneID (NCBI): 5777	Recommended Dilutions: IF 1:50-1:500
Source: Rabbit	UNIPROT ID: P29350	Excitation/Emission maxima wavelengths: 493 nm / 522 nm
Isotype: IgG	Full Name: protein tyrosine phosphatase, non-receptor type 6	
Immunogen Catalog Number: AG21415	Calculated MW: 597 aa, 68 kDa	
	Observed MW: 63 kDa	

Applications

Tested Applications: IF, FC (Intra)	Positive Controls: IF : MCF-7 cells,
Species Specificity: human	

Background Information

PTPN6(Tyrosine-protein phosphatase non-receptor type 6) is also named as HCP, PTP1C and belongs to the protein-tyrosine phosphatase family. It regulates muscle INS action in a cell-autonomous manner, further suggesting that the PTPase negatively modulates INS action through down-regulation of both INS signaling to AKT1 and SLC2A4 translocation, as well as SLC2A4 expression(PMID:21952243). It has 4 isoforms produced by alternative splicing.

Storage

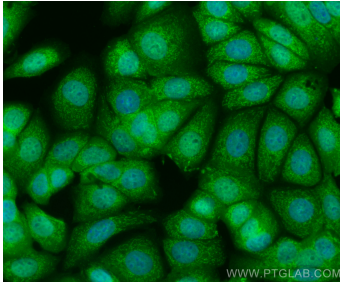
Storage:
Store at -20°C. Avoid exposure to light. Stable for one year after shipment.
Storage Buffer:
PBS with 50% Glycerol, 0.05% Proclin300, 0.5% BSA, pH 7.3.
Aliquoting is unnecessary for -20°C storage

*** 20ul sizes contain 0.1% BSA

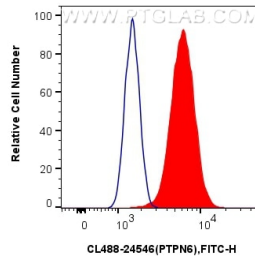
For technical support and original validation data for this product please contact:
T: 1 (888) 4PTGLAB (1-888-478-4522) (toll free in USA), or 1(312) 455-8498 (outside USA)
E: proteintech@ptglab.com
W: ptglab.com

This product is exclusively available under Proteintech Group brand and is not available to purchase from any other manufacturer.

Selected Validation Data



Immunofluorescent analysis of (4% PFA) fixed MCF-7 cells using CoraLite® Plus 488 PTPN6 antibody (CL488-24546) at dilution of 1:200.



1X10⁶ MCF-7 cells were intracellularly stained with 0.4 ug CoraLite® Plus 488 Anti-Human PTPN6 (CL488-24546) (red), or 0.4 ug CoraLite® Plus 488-conjugated Rabbit IgG control Rabbit PolyAb (CL488-30000, Clone:) (blue). Cells were fixed with 4% PFA and permeabilized with Flow Cytometry Perm Buffer (PF00011-C).