

For Research Use Only

# CoraLite® Plus 488-conjugated TOP2A Polyclonal antibody



Catalog Number: CL488-24641

Featured Product

## Basic Information

<b>Catalog Number:</b> CL488-24641	<b>GenBank Accession Number:</b> BC140791	<b>Purification Method:</b> Antigen affinity purification
<b>Size:</b> 100ul , Concentration: 1000 µg/ml by Nanodrop;	<b>GeneID (NCBI):</b> 7153	<b>Recommended Dilutions:</b> IF 1:200-1:800
<b>Source:</b> Rabbit	<b>Full Name:</b> topoisomerase (DNA) II alpha 170kDa	<b>Excitation/Emission maxima wavelengths:</b> 493 nm / 522 nm
<b>Isotype:</b> IgG	<b>Calculated MW:</b> 1531 aa, 174 kDa	
<b>Immunogen Catalog Number:</b> AG19551	<b>Observed MW:</b> 174 kDa	

## Applications

<b>Tested Applications:</b> IF	<b>Positive Controls:</b> IF : A431 cells,
<b>Species Specificity:</b> human, mouse	

## Background Information

TOP2A, also named as TOP2, belongs to the type II topoisomerase family. Topoisomerase II makes double-strand breaks. TOP2 control the topological states of DNA by transient breakage and subsequent rejoining of DNA strands. TOP2A may play a role in regulating the period length of ARNTL/BMAL1 transcriptional oscillation. DNA topoisomerase IIa (170 kDa, TOP2a/170) is essential in proliferating cells by resolving DNA topological entanglements during chromosome condensation, replication, and segregation.

## Storage

**Storage:**  
Store at -20°C. Avoid exposure to light. Stable for one year after shipment.  
**Storage Buffer:**  
PBS with 50% Glycerol, 0.05% Proclin300, 0.5% BSA, pH 7.3.  
Aliquoting is unnecessary for -20°C storage

\*\*\* 20ul sizes contain 0.1% BSA

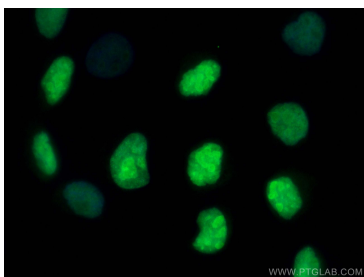
For technical support and original validation data for this product please contact:

T: 1 (888) 4PTGLAB (1-888-478-4522) (toll free  
in USA), or 1(312) 455-8498 (outside USA)

E: [proteintech@ptglab.com](mailto:proteintech@ptglab.com)  
W: [ptglab.com](http://ptglab.com)

This product is exclusively available under Proteintech Group brand and is not available to purchase from any other manufacturer.

## Selected Validation Data



Immunofluorescent analysis of (4% PFA) fixed A431 cells using Coralite® Plus 488 TOP2A antibody (CL488-24641) at dilution of 1:400.