

For Research Use Only

CoraLite® Plus 488-conjugated YTHDF2 Polyclonal antibody



Catalog Number: CL488-24744

Featured Product

Basic Information

Catalog Number: CL488-24744	GenBank Accession Number: BC002559	Purification Method: Antigen affinity purification
Size: 100ul , Concentration: 1000 µg/ml by Nanodrop;	GeneID (NCBI): 51441	Excitation/Emission maxima wavelengths: 488 nm / 515 nm
Source: Rabbit	Full Name: YTH domain family, member 2	
Isotype: IgG	Calculated MW: 62 kDa	
Immunogen Catalog Number: AG5922	Observed MW: 62 kDa	

Applications

Tested Applications:
FC (Intra)

Species Specificity:
human, mouse, rat

Background Information

YTHDF2 also named as CLL associated antigen KW 14 or HGRG8 is a 579 amino acid protein, which contains one YTH domain and exists as two alternatively spliced isoforms. YTHDF2 is expressed in in pancreas, testis and placenta. YTHDF2 may play a role in human longevity.

Storage

Storage:
Store at -20°C. Avoid exposure to light.

Storage Buffer:
PBS with 50% Glycerol, 0.05% Proclin300, 0.5% BSA, pH 7.3.

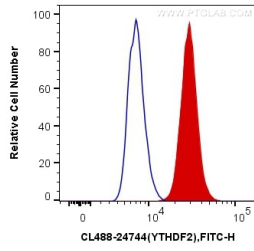
Aliquoting is unnecessary for -20°C storage

*** 20ul sizes contain 0.1% BSA

For technical support and original validation data for this product please contact:
T: 1 (888) 4PTGLAB (1-888-478-4522) (toll free in USA), or 1(312) 455-8498 (outside USA) E: proteintech@ptglab.com W: ptglab.com

This product is exclusively available under Proteintech Group brand and is not available to purchase from any other manufacturer.

Selected Validation Data



1X10⁶ HeLa cells were intracellularly stained with 0.4 ug CoraLite® Plus 488 Anti-Human YTHDF2 (CL488-24744) (red), or 0.4 ug Control Antibody. Cells were fixed with 4% PFA and permeabilized with Flow Cytometry Perm Buffer (PF00011-C).