

For Research Use Only

CoraLite® Plus 488-conjugated GIGYF2 Polyclonal antibody

Catalog Number: CL488-24790

Featured Product



Basic Information

Catalog Number:

CL488-24790

Size:

100ul, Concentration: 1000 ug/ml by Nanodrop;

Source:

Rabbit

Isotype:

IgG

Immunogen Catalog Number:

AG20329

GenBank Accession Number:

BC146775

GeneID (NCBI):

26058

UNIPROT ID:

Q6Y7W6

Full Name:

GRB10 interacting GYF protein 2

Calculated MW:

1320 aa, 152 kDa

Observed MW:

150-170 kDa

Purification Method:

Antigen affinity purification

Recommended Dilutions:

IF/ICC 1:50-1:500

Excitation/Emission maxima wavelengths:

493 nm / 522 nm

Applications

Tested Applications:

IF/ICC

Species Specificity:

human, mouse

Positive Controls:

IF/ICC : HeLa cells,

Background Information

GIGYF2 (GRB10 interacting GYF protein 2) was initially identified through its interaction with GRB10, an adapter protein that binds activated INS-like growth factor (IGF-I) and INS receptors (PMID: 12771153; 19744960). It may act cooperatively with GRB10 to regulate tyrosine kinase receptor signaling. The gene of GIGYF2 has been proposed as the Parkinson-disease (PD) gene underlying the PARK11 locus (PMID: 18358451).

Storage

Storage:

Store at -20°C. Avoid exposure to light. Stable for one year after shipment.

Storage Buffer:

PBS with 50% Glycerol, 0.05% Proclin300, 0.5% BSA, pH 7.3.

Aliquoting is unnecessary for -20°C storage

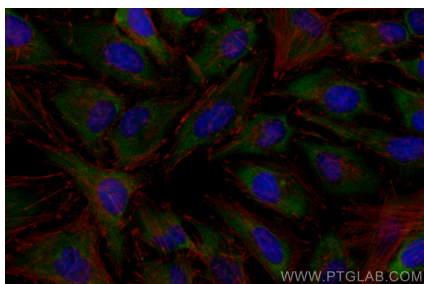
For technical support and original validation data for this product please contact:

T: 1 (888) 4PTGLAB (1-888-478-4522) (toll free in USA), or 1(312) 455-8498 (outside USA)

E: proteintech@ptglab.com
W: ptglab.com

This product is exclusively available under Proteintech Group brand and is not available to purchase from any other manufacturer.

Selected Validation Data



Immunofluorescent analysis of (-20°C Ethanol)
fixed HeLa cells using CoraLite® Plus 488 GIGYF2
antibody (CL488-24790) at dilution of 1:200.