

For Research Use Only

CoraLite® Plus 488-conjugated ATXN2L Polyclonal antibody

Catalog Number: CL488-24822

Featured Product



Basic Information

Catalog Number:

CL488-24822

Size:

100ul , Concentration: 1000 ug/ml by Nanodrop;

Source:

Rabbit

Isotype:

IgG

Immunogen Catalog Number:

AG20581

GenBank Accession Number:

BC082760

GeneID (NCBI):

11273

UNIPROT ID:

Q8WWM7

Full Name:

ataxin 2-like

Calculated MW:

1062 aa, 112 kDa

Observed MW:

~140 kDa

Purification Method:

Antigen affinity purification

Recommended Dilutions:

IF/ICC 1:50-1:500

Excitation/Emission maxima wavelengths:

493 nm / 522 nm

Applications

Tested Applications:

IF/ICC, FC (Intra)

Species Specificity:

human, mouse

Positive Controls:

IF/ICC : A431 cells,

Background Information

ATXN2L is a paralog of Ataxin-2 (ATXN2) but without abnormal polyQ expanded track, which is conserved in most of the ATXNs and drives the pathogenesis of neurodegeneration. It was reported that ATXN2L was widely expressed in immortalized cell lines, and ATXN2L-JAK2 fusion was found in CD4-positive T-cell lymphoma.

Storage

Storage:

Store at -20°C. Avoid exposure to light. Stable for one year after shipment.

Storage Buffer:

PBS with 50% Glycerol, 0.05% Proclin300, 0.5% BSA, pH 7.3.

Aliquoting is unnecessary for -20°C storage

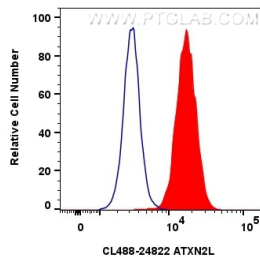
For technical support and original validation data for this product please contact:

T: 1 (888) 4PTGLAB (1-888-478-4522) (toll free in USA), or 1(312) 455-8498 (outside USA)

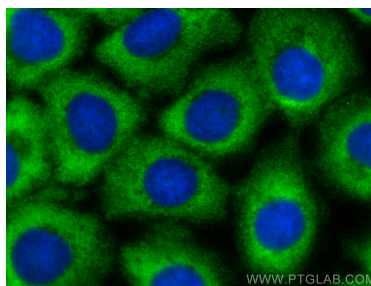
E: proteintech@ptglab.com
W: ptglab.com

This product is exclusively available under Proteintech Group brand and is not available to purchase from any other manufacturer.

Selected Validation Data



1×10^6 A431 cells were intracellularly stained with 0.8 μ g Coralite® Plus 488 Atxn2L Polyclonal Antibody (CL488-24822)(red), or 0.8 μ g Coralite® Plus 488-conjugated Rabbit IgG control Rabbit PolyAb (CL488-30000) (blue). Cells were fixed with 4% PFA and permeabilized with Flow Cytometry Perm Buffer (PF00011-C).



Immunofluorescent analysis of (-20°C Methanol) fixed A431 cells using Coralite® Plus 488 ATXN2L antibody (CL488-24822) at dilution of 1:100.