

For Research Use Only

CoraLite® Plus 488-conjugated WDR81 Polyclonal antibody

Catalog Number: CL488-24874

Featured Product



Basic Information

Catalog Number:

CL488-24874

Size:

100ul , Concentration: 1000 ug/ml by Nanodrop;

Source:

Rabbit

Isotype:

IgG

Immunogen Catalog Number:

AG21666

GenBank Accession Number:

BC114568

GeneID (NCBI):

124997

UNIPROT ID:

Q562E7

Full Name:

WD repeat domain 81

Calculated MW:

1941 aa, 212 kDa

Observed MW:

74-80 kDa, 250 kDa

Purification Method:

Antigen affinity purification

Recommended Dilutions:

IF/ICC 1:50-1:500

Excitation/Emission maxima wavelengths:

493 nm / 522 nm

Applications

Tested Applications:

IF/ICC

Species Specificity:

human, mouse

Positive Controls:

IF/ICC : HepG2 cells,

Background Information

WD repeat-containing protein 81 (WDR81) is a 1941 amino acid protein, which contains one BEACH domain and five WD repeats. WDR81 is widely expressed in the brain. WDR81 has an association with cerebellar ataxia, mental retardation, and dysequilibrium syndrome 2. WDR81 exists as six isoforms.

Storage

Storage:

Store at -20°C. Avoid exposure to light. Stable for one year after shipment.

Storage Buffer:

PBS with 50% Glycerol, 0.05% Proclin300, 0.5% BSA, pH 7.3.

Aliquoting is unnecessary for -20°C storage

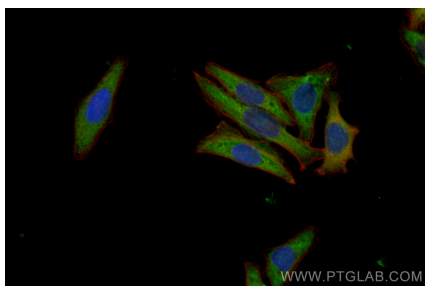
For technical support and original validation data for this product please contact:

T: 1 (888) 4PTGLAB (1-888-478-4522) (toll free in USA), or 1(312) 455-8498 (outside USA)

E: proteintech@ptglab.com
W: ptglab.com

This product is exclusively available under Proteintech Group brand and is not available to purchase from any other manufacturer.

Selected Validation Data



Immunofluorescent analysis of (-20°C Ethanol)
fixed HepG2 cells using CoraLite® Plus 488 WDR81
antibody (CL488-24874) at dilution of 1:200.