

For Research Use Only

CoraLite® Plus 488-conjugated C6orf15 Polyclonal antibody

Catalog Number:CL488-24953



Basic Information

Catalog Number: CL488-24953	GenBank Accession Number: BC153157	Purification Method: Antigen affinity purification
Size: 100ul , Concentration: 1000 ug/ml by Nanodrop;	GeneID (NCBI): 29113	Recommended Dilutions: IF/ICC 1:50-1:500
Source: Rabbit	UNIPROT ID: Q6UXA7	Excitation/Emission maxima wavelengths: 493 nm / 522 nm
Isotype: IgG	Full Name: chromosome 6 open reading frame 15	
Immunogen Catalog Number: AG20276	Calculated MW: 325 aa, 34 kDa	
	Observed MW: 50-55 kDa	

Applications

Tested Applications: IF/ICC	Positive Controls: IF/ICC : A375 cells,
Species Specificity: human, mouse	

Background Information

C6orf15, also named as Protein STG, is a 325 amino acid protein, which as a secreted protein is expressed in skin and tonsils. The calculated molecular weight of C6orf15 is 34 kDa, but we detected a 50-55 kDa protein by western blot. C6orf15 may contains some modified residues.

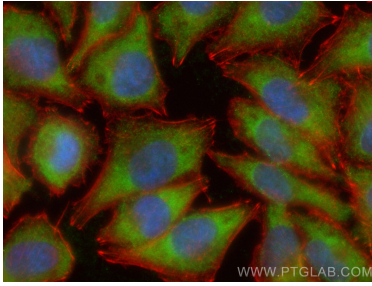
Storage

Storage:
Store at -20°C. Avoid exposure to light. Stable for one year after shipment.
Storage Buffer:
PBS with 50% Glycerol, 0.05% Proclin300, 0.5% BSA, pH 7.3.
Aliquoting is unnecessary for -20°C storage

For technical support and original validation data for this product please contact:
T: 1 (888) 4PTGLAB (1-888-478-4522) (toll free in USA), or 1(312) 455-8498 (outside USA)
E: proteintech@ptglab.com
W: ptglab.com

This product is exclusively available under Proteintech Group brand and is not available to purchase from any other manufacturer.

Selected Validation Data



Immunofluorescent analysis of (-20°C Ethanol) fixed A375 cells using Coralite® Plus 488 C6orf15 antibody (CL488-24953) at dilution of 1:200, CL594-Phalloidin (red).