

For Research Use Only

CoraLite® Plus 488-conjugated RELB Polyclonal antibody

Catalog Number: CL488-25027

1 Publications



Basic Information

Catalog Number:

CL488-25027

Size:

100ul , Concentration: 1000 ug/ml by Nanodrop;

Source:

Rabbit

Isotype:

IgG

Immunogen Catalog Number:

AG13824

GenBank Accession Number:

BC028013

GeneID (NCBI):

5971

UNIPROT ID:

Q01201

Full Name:

v-rel reticuloendotheliosis viral oncogene homolog B

Calculated MW:

62 kDa

Observed MW:

62-65 kDa

Purification Method:

Antigen affinity purification

Recommended Dilutions:

IF/ICC 1:50-1:500

Excitation/Emission maxima wavelengths:

493 nm / 522 nm

Applications

Tested Applications:

IF/ICC, FC (Intra)

Cited Applications:

IF

Species Specificity:

human

Cited Species:

mouse

Positive Controls:

IF/ICC : HeLa cells,

Background Information

RELB, also named as Transcription factor RelB, is a 579 amino acid protein, which contains one RHD domain. RELB localizes in the nucleus and cytoplasm. RELB is a pleiotropic transcription factor which is present in almost all cell types and is involved in many biological processes such as inflammation, immunity, differentiation, cell growth, tumorigenesis and apoptosis.

Notable Publications

| Author | Pubmed ID | Journal | Application |
|--------|-----------|----------|-------------|
| Ran Qi | 39823994 | Cytokine | IF |

Storage

Storage:

Store at -20°C. Avoid exposure to light. Stable for one year after shipment.

Storage Buffer:

PBS with 50% Glycerol, 0.05% Proclin300, 0.5% BSA, pH 7.3.

Aliquoting is unnecessary for -20°C storage

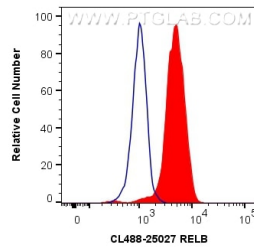
For technical support and original validation data for this product please contact:

T: 1 (888) 4PTGLAB (1-888-478-4522) (toll free in USA), or 1(312) 455-8498 (outside USA)

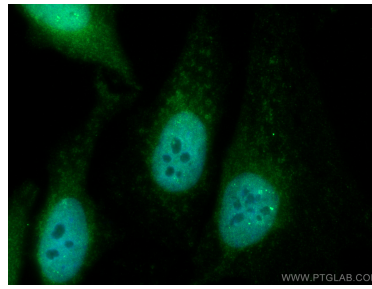
E: proteintech@ptglab.com
W: ptglab.com

This product is exclusively available under Proteintech Group brand and is not available to purchase from any other manufacturer.

Selected Validation Data



1X10⁶ Jurkat cells were intracellularly stained with 0.8 ug CoraLite® Plus 488 Anti-Human RELB (CL488-25027) (red), or 0.8 ug Isotype Control. Cells were fixed with 4% PFA and permeabilized with Flow Cytometry Perm Buffer (PF00011-C).



Immunofluorescent analysis of (4% PFA) fixed HeLa cells using CoraLite® Plus 488 RELB antibody (CL488-25027) at dilution of 1:200.