

For Research Use Only

# CoraLite® Plus 488-conjugated SAMD9L Polyclonal antibody

Catalog Number: CL488-25173

Featured Product



## Basic Information

Catalog Number:

CL488-25173

Size:

100ul , Concentration: 1000 ug/ml by  
Nanodrop;

Source:

Rabbit

Isotype:

IgG

Immunogen Catalog Number:

AG18541

GenBank Accession Number:

BC127118

GeneID (NCBI):

219285

UNIPROT ID:

Q8IVG5

Full Name:

sterile alpha motif domain containing  
9-like

Calculated MW:

1584 aa, 185 kDa

Observed MW:

160-180 kDa

Purification Method:

Antigen affinity purification

Recommended Dilutions:

IF/ICC 1:50-1:500

Excitation/Emission maxima  
wavelengths:

493 nm / 522 nm

## Applications

Tested Applications:

IF/ICC

Species Specificity:

human, mouse, rat

Positive Controls:

IF/ICC : 3T3-L1 cells,

## Background Information

Sterile alpha motif domain-containing protein 9-like(SAMD9L), also named as C7orf6, DRIF2, KIAA2005 and UEF, is a cytoplasmic protein that acts as a tumor suppressor but also plays a key role in cell proliferation and the innate immune response to viral infection. SAMD9L protein is an endosome fusion facilitator which causes myeloid malignancies in mice similar to human diseases with monosomy 7. The SAMD9L protein also appears to play an important role in the brain, particularly the part of the brain that coordinates movement (the cerebellum). SAMD9L has two isoforms with MW 185 kDa and 47 kDa.

## Storage

Storage:

Store at -20°C. Avoid exposure to light. Stable for one year after shipment.

Storage Buffer:

PBS with 50% Glycerol, 0.05% Proclin300, 0.5% BSA, pH 7.3.

Aliquoting is unnecessary for -20°C storage

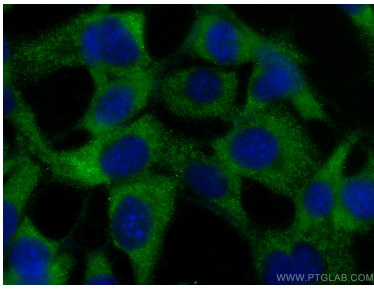
For technical support and original validation data for this product please contact:

T: 1 (888) 4PTGLAB (1-888-478-4522) (toll free  
in USA), or 1(312) 455-8498 (outside USA)

E: [proteintech@ptglab.com](mailto:proteintech@ptglab.com)  
W: [ptglab.com](http://ptglab.com)

This product is exclusively available under Proteintech Group brand and is not available to purchase from any other manufacturer.

## Selected Validation Data



Immunofluorescent analysis of (-20°C Ethanol)  
fixed 3T3-L1 cells using CoraLite® Plus 488  
SAMD9L antibody (CL488-25173) at dilution of  
1:200.