

For Research Use Only

CoraLite® Plus 488-conjugated SLC25A22 Polyclonal antibody

Catalog Number: CL488-25402



Basic Information

Catalog Number:

CL488-25402

Size:

100ul , Concentration: 1000 ug/ml by
Nanodrop;

Source:

Rabbit

Isotype:

IgG

Immunogen Catalog Number:

AG19958

GenBank Accession Number:

BC023545

GeneID (NCBI):

79751

UNIPROT ID:

Q9H936

Full Name:

solute carrier family 25
(mitochondrial carrier: glutamate),
member 22

Calculated MW:

323 aa, 34 kDa

Observed MW:

30-34 kDa

Purification Method:

Antigen affinity purification

Recommended Dilutions:

IF-P 1:50-1:500

Excitation/Emission maxima wavelengths:

493 nm / 522 nm

Applications

Tested Applications:

IF-P

Species Specificity:

human, mouse, rat

Positive Controls:

IF-P : mouse brain tissue,

Background Information

SLC25A22 encodes a mitochondrial glutamate/H⁺ symporter with highly expression in brain, especially in astrocytes, where it controls glutamate uptake. The mutations of SLC25A22 are associated with the early/infantile epileptic encephalopathies. It has been shown that SLC25A22 plays a key role in promoting proliferation and migration in cancer, such as human colorectal cancer (CRC) and Gallbladder cancer (GBC). And there is a result that the expression of SLC25A22 in GBC was significantly higher than that in adjacent tissues. 25402-1-AP antibody is specific to SLC25A22.(PMID: 30814911, 25033742, 24596948)

Storage

Storage:

Store at -20°C. Avoid exposure to light. Stable for one year after shipment.

Storage Buffer:

PBS with 50% Glycerol, 0.05% Proclin300, 0.5% BSA, pH 7.3.

Aliquoting is unnecessary for -20°C storage

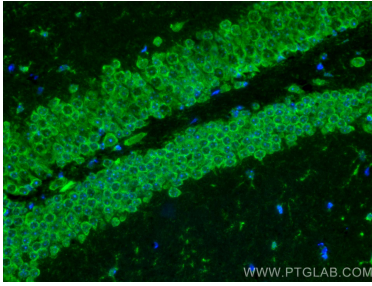
For technical support and original validation data for this product please contact:

T: 1 (888) 4PTGLAB (1-888-478-4522) (toll free
in USA), or 1(312) 455-8498 (outside USA)

E: proteintech@ptglab.com
W: ptglab.com

This product is exclusively available under Proteintech Group brand and is not available to purchase from any other manufacturer.

Selected Validation Data



Immunofluorescent analysis of (4% PFA) fixed mouse brain tissue using CoraLite® Plus 488 SLC25A22 antibody (CL488-25402) at dilution of 1:200.