

For Research Use Only

CoraLite® Plus 488-conjugated XBP-1U specific Polyclonal antibody



Catalog Number: CL488-25997

Featured Product

Basic Information

Catalog Number: CL488-25997	GenBank Accession Number: BC000938	Purification Method: Antigen affinity purification
Size: 100ul , Concentration: 1000 µg/ml by Nanodrop;	GeneID (NCBI): 7494	Excitation/Emission maxima wavelengths: 493 nm / 522 nm
Source: Rabbit	Full Name: X-box binding protein 1	
Isotype: IgG	Calculated MW: 261 aa, 29 kDa	
Immunogen Catalog Number: AG21714	Observed MW: 32 kDa	

Applications

Tested Applications:
FC (Intra)

Species Specificity:
human, mouse, rat

Background Information

X-box-binding protein 1 (XBP1), also named as TREB5, is a 261 amino acid protein, which contains one bZIP domain and belongs to the bZIP family. XBP1 localizes in the nucleus and as a transcription factor is essential for hepatocyte growth, the differentiation of plasma cells, the immunoglobulin secretion, and the unfolded protein response. XBP1 has an association with major affective disorder. The molecular weight of protein generated from the spliced XBP1 mRNA is 54 kDa and protein generated from unspliced Xbp1 mRNA is 33 kDa. This antibody 25997-1-AP specially recognizes isoform XBP-1U.

Storage

Storage:
Store at -20°C. Avoid exposure to light. Stable for one year after shipment.
Storage Buffer:
PBS with 50% Glycerol, 0.05% Proclin300, 0.5% BSA, pH 7.3.
Aliquoting is unnecessary for -20°C storage

*** 20ul sizes contain 0.1% BSA

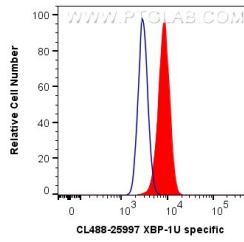
For technical support and original validation data for this product please contact:

T: 1 (888) 4PTGLAB (1-888-478-4522) (toll free in USA), or 1(312) 455-8498 (outside USA)

E: proteintech@ptglab.com
W: ptglab.com

This product is exclusively available under Proteintech Group brand and is not available to purchase from any other manufacturer.

Selected Validation Data



1X10⁶ HepG2 cells were intracellularly stained with 0.8 ug CoraLite® Plus 488 Anti-Human XBP-1U specific (CL488-25997) (red), or 0.8 ug CoraLite® Plus 488-conjugated Rabbit IgG control Rabbit PolyAb (CL488-30000, Clone:) (blue). Cells were fixed with 4% PFA and permeabilized with Flow Cytometry Perm Buffer (PF00011-C).