

For Research Use Only

CoraLite® Plus 488-conjugated pan-keratin Polyclonal antibody

Catalog Number: CL488-26411



Basic Information

Catalog Number: CL488-26411	GenBank Accession Number: BC024292	Purification Method: Antigen affinity purification
Size: 100ul , Concentration: 1000 ug/ml by Nanodrop;	GeneID (NCBI): 3852	Recommended Dilutions: IF-P 1:50-1:500 IF/ICC 1:50-1:500
Source: Rabbit	UNIPROT ID: P13647	Excitation/Emission maxima wavelengths: 493 nm / 522 nm
Isotype: IgG	Full Name: keratin 5	
Immunogen Catalog Number: AG24184	Calculated MW: 590 aa, 62 kDa	

Applications

Tested Applications: IF/ICC, IF-P, FC (Intra)	Positive Controls:
Species Specificity: human	IF-P : human colon cancer tissue, human lung cancer tissue, human rectal cancer tissue
	IF/ICC : HeLa cells, A431 cells

Background Information

Keratins are a large family of proteins that form the intermediate filament cytoskeleton of epithelial cells, which are classified into two major sequence types. Type I keratins are a group of acidic intermediate filament proteins, including K9-K23, and the hair keratins Ha1-Ha8. Type II keratins are the basic or neutral counterparts to the acidic type I keratins, including K1-K8, and the hair keratins, Hb1-Hb6. Keratin isoforms demonstrate tissue- and differentiation-specific profiles that make them useful as research biomarkers. Research studies have shown that mutations in keratin genes are associated with skin disorders, liver and pancreatic diseases, and inflammatory intestinal diseases. This antibody is a pan-keratin antibody.

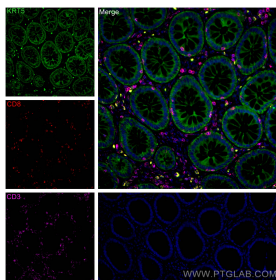
Storage

Storage:
Store at -20°C. Avoid exposure to light. Stable for one year after shipment.
Storage Buffer:
PBS with 50% Glycerol, 0.05% Proclin300, 0.5% BSA, pH 7.3.
Aliquoting is unnecessary for -20°C storage

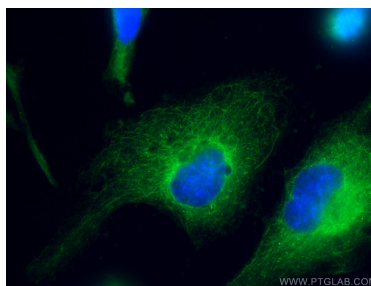
For technical support and original validation data for this product please contact:
T: 1 (888) 4PTGLAB (1-888-478-4522) (toll free in USA), or 1(312) 455-8498 (outside USA)
E: proteintech@ptglab.com
W: ptglab.com

This product is exclusively available under Proteintech Group brand and is not available to purchase from any other manufacturer.

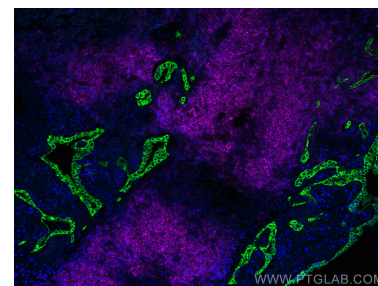
Selected Validation Data



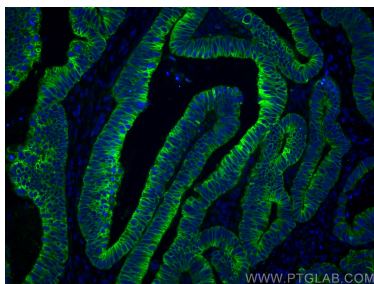
Immunofluorescent analysis of (4% PFA) fixed human colon cancer tissue using CoraLite® Plus 488 pan-keratin antibody (CL488-26411) at dilution of 1:200, CoraLite® Plus 647 CD3 antibody (CL647-60181, Clone: 3F3A1, Magenta) at dilution of 1:100, CoraLite® 594 CD8 antibody (CL594-66868, Clone: 1G2B10, Red) at dilution of 1:400. DAPI (Blue).



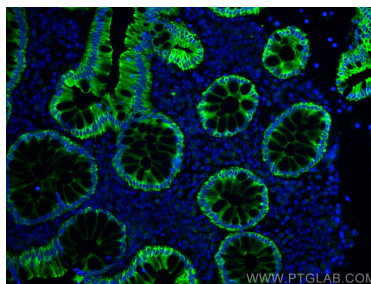
Immunofluorescent analysis of (4% PFA) fixed HeLa cells using CoraLite® Plus 488 pan-keratin antibody (CL488-26411) at dilution of 1:100.



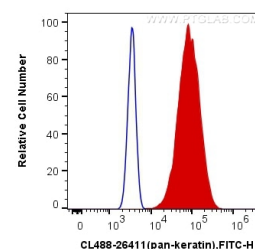
Immunofluorescent analysis of (4% PFA) fixed human lung cancer tissue using CoraLite® Plus 488 pan-keratin antibody (CL488-26411) at dilution of 1:200, CoraLite® Plus 647 CD20 antibody (CL647-60271, Clone: 4A7G3, Magenta).



Immunofluorescent analysis of (4% PFA) fixed human colon cancer tissue using CoraLite® Plus 488 pan-keratin antibody (CL488-26411) at dilution of 1:100.



Immunofluorescent analysis of (4% PFA) fixed human colon cancer tissue using CoraLite® Plus 488 pan-keratin antibody (CL488-26411) at dilution of 1:100.



1X10⁶ A431 cells were intracellularly stained with 0.4 ug CoraLite® Plus 488 Anti-Human pan-keratin (CL488-26411) (red), or 0.4 ug Control Antibody. Cells were fixed with 4% PFA and permeabilized with Flow Cytometry Perm Buffer (PF00011-C).