

For Research Use Only

CoraLite® Plus 488-conjugated Bcl2 Polyclonal antibody



Catalog Number: CL488-26593

Featured Product

Basic Information

Catalog Number:

CL488-26593

Size:

100ul , Concentration: 1000 µg/ml by Nanodrop;

Source:

Rabbit

Isotype:

IgG

Immunogen Catalog Number:

AG24260

GenBank Accession Number:

NM-009741

GeneID (NCBI):

12043

Full Name:

B-cell leukemia/lymphoma 2

Calculated MW:

26 kDa

Observed MW:

26 kDa

Purification Method:

Antigen affinity purification

Recommended Dilutions:

IF 1:50-1:500

Excitation/Emission maxima wavelengths:

493 nm / 522 nm

Applications

Tested Applications:

IF

Species Specificity:

mouse, rat, human

Positive Controls:

IF : NIH/3T3 cells,

Background Information

Bcl2 is a member of the B cell lymphoma 2 protein family. Members of this family regulate cell death in multiple cell types and can have either proapoptotic or antiapoptotic activities. The protein encoded by this gene inhibits mitochondrial-mediated apoptosis. This protein is an integral outer mitochondrial membrane protein that functions as part of signaling pathway that controls mitochondrial permeability in response to apoptotic stimuli. This protein may also play a role in neuron cell survival and autophagy. Abnormal expression and chromosomal translocations of this gene are associated with cancer progression in numerous tissues.

Storage

Storage:

Store at -20°C. Avoid exposure to light. Stable for one year after shipment.

Storage Buffer:

PBS with 50% Glycerol, 0.05% Proclin300, 0.5% BSA, pH 7.3.

Aliquoting is unnecessary for -20°C storage

*** 20ul sizes contain 0.1% BSA

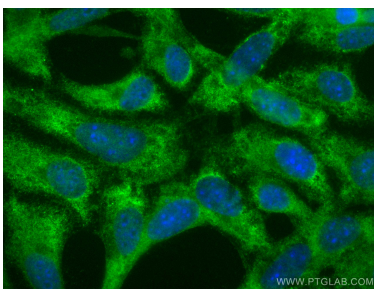
For technical support and original validation data for this product please contact:

T: 1 (888) 4PTGLAB (1-888-478-4522) (toll free in USA), or 1(312) 455-8498 (outside USA)

E: proteintech@ptglab.com
W: ptglab.com

This product is exclusively available under Proteintech Group brand and is not available to purchase from any other manufacturer.

Selected Validation Data



Immunofluorescent analysis of (-20°C Ethanol) fixed NIH/3T3 cells using CoraLite® Plus 488 Bcl2 antibody (CL488-26593) at dilution of 1:200.