

For Research Use Only

# CoraLite® Plus 488-conjugated NUCB2/nesfatin-1 Polyclonal antibody

Catalog Number: CL488-26712



## Basic Information

<b>Catalog Number:</b> CL488-26712	<b>GenBank Accession Number:</b> NM_005013	<b>Purification Method:</b> Antigen affinity purification
<b>Size:</b> 100ul , Concentration: 1000 ug/ml by Nanodrop;	<b>GeneID (NCBI):</b> 4925	<b>Recommended Dilutions:</b> IF/ICC 1:50-1:500
<b>Source:</b> Rabbit	<b>Full Name:</b> nucleobindin 2	<b>Excitation/Emission maxima wavelengths:</b> 493 nm / 522 nm
<b>Isotype:</b> IgG	<b>Calculated MW:</b> 50 kDa	
<b>Immunogen Catalog Number:</b> AG25152	<b>Observed MW:</b> 45-50 kDa	

## Applications

<b>Tested Applications:</b> IF/ICC, FC (Intra)	<b>Positive Controls:</b> IF/ICC : HepG2 cells,
<b>Species Specificity:</b> human, mouse, rat	

## Background Information

NucB2, an anorexigenic molecule, is expressed mainly in the hypothalamus, particularly in the supraoptic nucleus (SON) and the paraventricular nucleus (PVN). NucB2 is also expressed in the subfornical organ (SFO). Because the SON and PVN are involved in body fluid regulation, NucB2 may be involved in dehydration-induced anorexia. NUCB2 is composed of a signal peptide of 24 amino acids in the N-terminal region and a protein structure containing 396 amino acids. Nesfatin-1 is an 82-amino-acid peptide hormone cleaved from nucleobindin2 (NUCB2).

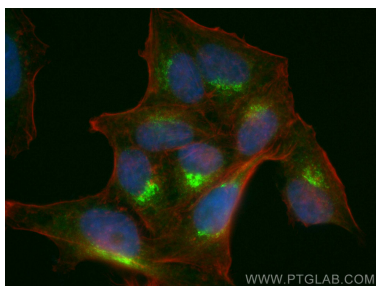
## Storage

**Storage:**  
Store at -20°C. Avoid exposure to light. Stable for one year after shipment.  
**Storage Buffer:**  
PBS with 50% Glycerol, 0.05% Proclin300, 0.5% BSA, pH 7.3.  
Aliquoting is unnecessary for -20°C storage

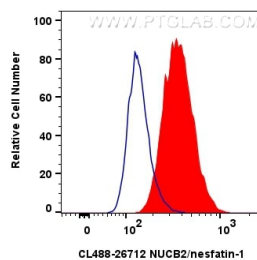
For technical support and original validation data for this product please contact:  
T: 1 (888) 4PTGLAB (1-888-478-4522) (toll free in USA), or 1(312) 455-8498 (outside USA)  
E: [proteintech@ptglab.com](mailto:proteintech@ptglab.com)  
W: [ptglab.com](http://ptglab.com)

This product is exclusively available under Proteintech Group brand and is not available to purchase from any other manufacturer.

## Selected Validation Data



Immunofluorescent analysis of (4% PFA) fixed HepG2 cells using Coralite® Plus 488 NUCB2/nesfatin-1 antibody (CL488-26712) at dilution of 1:200, CL594-phalloidin (red).



1x10<sup>6</sup> HepG2 cells were intracellularly stained with 0.8 ug Coralite® Plus 488-conjugated NUCB2/nesfatin-1 Polyclonal antibody (CL488-26712)(red), or 0.8 ug Coralite® Plus 488-conjugated Rabbit IgG control Rabbit PolyAb (CL488-30000) (blue). Cells were fixed with 4% PFA and permeabilized with Flow Cytometry Perm Buffer (PF00011-C).