

For Research Use Only

CoraLite® Plus 488-conjugated P27; KIP1 Polyclonal antibody



Catalog Number: CL488-26714

Featured Product

Basic Information

Catalog Number:

CL488-26714

Size:

100ul , Concentration: 1000 µg/ml by
Nanodrop;

Source:

Rabbit

Isotype:

IgG

Immunogen Catalog Number:

AG25083

GenBank Accession Number:

BC001971

GeneID (NCBI):

1027

UNIPROT ID:

P46527

Full Name:

cyclin-dependent kinase inhibitor 1B
(p27, Kip1)

Calculated MW:

198 aa, 22 kDa

Observed MW:

27 kDa

Purification Method:

Antigen affinity purification

Recommended Dilutions:

IF 1:50-1:500

**Excitation/Emission maxima
wavelengths:**

493 nm / 522 nm

Applications

Tested Applications:

IF, FC (Intra)

Species Specificity:

human, mouse

Positive Controls:

IF : HepG2 cells, A431 cells

Background Information

CDKN1B, also named as P27 or KIP1, is a cyclin-dependent kinase inhibitor, which shares a limited similarity with CDK inhibitor CDKN1A/p21. P27 binds to and prevents the activation of cyclin E-CDK2 or cyclin D-CDK4 complexes, and thus controlling cell cycle progression at G1. The degradation of this protein, which is triggered by its CDK dependent phosphorylation and subsequent ubiquitination by SCF complexes, is required for the cellular transition from quiescence to the proliferative state. Downregulation of P27 has been implicated in the progression of several malignancies, including lung cancer, hepatocellular carcinoma, salivary cancer, oral squamous cell carcinomas, and gastric cancer.

Storage

Storage:

Store at -20°C. Avoid exposure to light. Stable for one year after shipment.

Storage Buffer:

PBS with 50% Glycerol, 0.05% Proclin300, 0.5% BSA, pH 7.3.

Aliquoting is unnecessary for -20°C storage

*** 20ul sizes contain 0.1% BSA

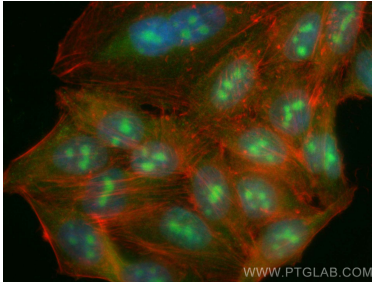
For technical support and original validation data for this product please contact:

T: 1 (888) 4PTGLAB (1-888-478-4522) (toll free
in USA), or 1(312) 455-8498 (outside USA)

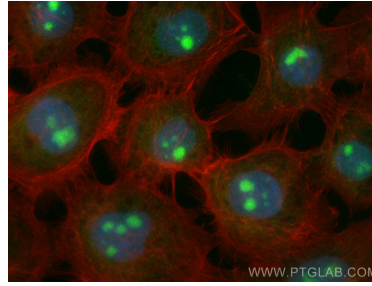
E: proteintech@ptglab.com
W: ptglab.com

This product is exclusively available under Proteintech Group brand and is not available to purchase from any other manufacturer.

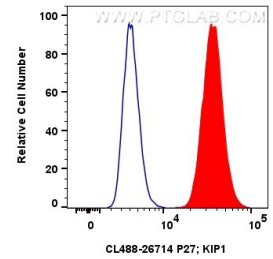
Selected Validation Data



Immunofluorescent analysis of (4% PFA) fixed HepG2 cells using Coralite® Plus 488 P27; KIP1 antibody (CL488-26714) at dilution of 1:200, CL594-phalloidin (red).



Immunofluorescent analysis of (4% PFA) fixed A431 cells using Coralite® Plus 488 P27; KIP1 antibody (CL488-26714) at dilution of 1:200, CL594-phalloidin (red).



1x10⁶ MCF-7 cells were intracellularly stained with 0.8 ug Coralite® Plus 488-conjugated P27; KIP1 Polyclonal antibody (CL488-26714)(red), or 0.8 ug Coralite® Plus 488-conjugated Rabbit IgG control Rabbit PolyAb (CL488-30000) (blue). Cells were fixed and permeabilized with Transcription Factor Staining Buffer Kit (PF00011).