

For Research Use Only

CoraLite® Plus 488-conjugated Cyclin D1 Polyclonal antibody



Catalog Number: CL488-26939

Featured Product

Basic Information

Catalog Number: CL488-26939	GenBank Accession Number: BC000076	Purification Method: Antigen affinity purification
Size: 100ul , Concentration: 1000 µg/ml by Nanodrop;	GeneID (NCBI): 595	Excitation/Emission maxima wavelengths: 493 nm / 522 nm
Source: Rabbit	Full Name: cyclin D1	
Isotype: IgG	Calculated MW: 295 aa, 34 kDa	
Immunogen Catalog Number: AG25393	Observed MW: 34 kDa	

Applications

Tested Applications:
FC (Intra)

Species Specificity:
human, mouse, rat

Background Information

CCND1 (cyclin D1), also known as PRAD1 or BCL1, belongs to the highly conserved cyclin family, whose members are characterized by a dramatic periodicity in protein abundance throughout the cell cycle. CCND1 forms a complex with and functions as a regulatory subunit of CDK4 or CDK6, whose activity is required for cell cycle G1/S transition. The CCND1 gene, located on 11q13 has been reported to be overexpressed in mantle cell lymphoma (MCL) due to the chromosomal translocation. CCND1 has been shown to interact with tumor suppressor protein Rb and the expression of this gene is regulated positively by Rb. Over-expression of CCND1 is known to correlate with the early onset of cancer and risk of tumor progression and metastasis.

Storage

Storage:
Store at -20°C. Avoid exposure to light. Stable for one year after shipment.

Storage Buffer:
PBS with 50% Glycerol, 0.05% Proclin300, 0.5% BSA, pH 7.3.

Aliquoting is unnecessary for -20°C storage

*** 20ul sizes contain 0.1% BSA

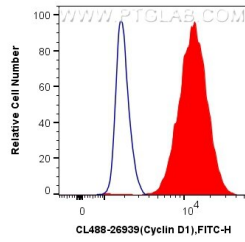
For technical support and original validation data for this product please contact:

T: 1 (888) 4PTGLAB (1-888-478-4522) (toll free in USA), or 1(312) 455-8498 (outside USA)

E: proteintech@ptglab.com
W: ptglab.com

This product is exclusively available under Proteintech Group brand and is not available to purchase from any other manufacturer.

Selected Validation Data



1X10⁶ MCF-7 cells were intracellularly stained with 0.8 ug CoraLite® Plus 488 Anti-Human Cyclin D1 (CL488-26939) (red), or 0.8 ug CoraLite® Plus 488-conjugated Rabbit IgG control Rabbit PolyAb (CL488-30000, Clone:) (blue). Cells were fixed and permeabilized with True-Nuclear Transcription Factor Buffer Set.