

For Research Use Only

CoraLite® Plus 488-conjugated Lipocalin-2/NGAL Polyclonal antibody

Catalog Number: CL488-26991

Featured Product



Basic Information

Catalog Number:

CL488-26991

Size:

100ul

Source:

Rabbit

Isotype:

IgG

Immunogen Catalog Number:

AG25715

GenBank Accession Number:

GeneID (NCBI):

3934

UNIPROT ID:

P80188

Full Name:

Lipocalin 2

Observed MW:

25 kDa

Purification Method:

Antigen affinity purification

Recommended Dilutions:

IF/ICC: 1:50-1:500

Excitation/Emission maxima wavelengths:

493 nm / 522 nm

Applications

Tested Applications:

IF/ICC

Species Specificity:

human

Positive Controls:

IF/ICC : RAW 264.7 cells,

Background Information

Neutrophil gelatinase-associated lipocalin (NGAL, also known as human neutrophil lipocalin, lipocalin-2, siderocalin, or LCN2) is a small molecule of almost 25 kDa that belongs to the well-defined superfamily of proteins called lipocalins. NGAL initially found in activated neutrophils, in accordance with its role as an innate antibacterial factor. However, it subsequently was shown that many other types of cells, including in the kidney tubule, may produce NGAL in response to various injuries. NGAL may become one of the most promising next-generation biomarkers in clinical nephrology and beyond.

Storage

Storage:

Store at -20°C. Avoid exposure to light. Stable for one year after shipment.

Storage Buffer:

PBS with 50% glycerol, 0.05% Proclin300, 0.5% BSA, pH7.3

Aliquoting is unnecessary for -20°C storage

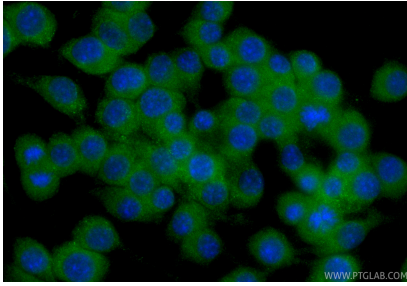
For technical support and original validation data for this product please contact:

T: 1 (888) 4PTGLAB (1-888-478-4522) (toll free in USA), or 1(312) 455-8498 (outside USA)

E: proteintech@ptglab.com
W: ptglab.com

This product is exclusively available under Proteintech Group brand and is not available to purchase from any other manufacturer.

Selected Validation Data



Immunofluorescent analysis of (4% PFA) fixed RAW 264.7 cells using CoraLite® Plus 488 Lipocalin-2/NGAL antibody (CL488-26991) at dilution of 1:200.