

For Research Use Only

CoraLite® Plus 488-conjugated DOCK4 Polyclonal antibody

Catalog Number:CL488-27151



Basic Information

Catalog Number:

CL488-27151

Size:

100ul , Concentration: 1000 ug/ml by Nanodrop;

Source:

Rabbit

Isotype:

IgG

Immunogen Catalog Number:

AG25946

GenBank Accession Number:

BC117689

GeneID (NCBI):

9732

UNIPROT ID:

Q8N1I0

Full Name:

dedicator of cytokinesis 4

Calculated MW:

2011 aa, 230 kDa

Observed MW:

225 kDa

Purification Method:

Antigen affinity purification

Recommended Dilutions:

IF/ICC 1:50-1:500

Excitation/Emission maxima wavelengths:

493 nm / 522 nm

Applications

Tested Applications:

IF/ICC, FC (Intra)

Species Specificity:

human

Positive Controls:

IF/ICC : HeLa cells,

Background Information

DOCK4, originally identified as a product of a gene which is deleted during tumor progression, is a member of DOCK180 family proteins. Dock4 has been found recently to be associated with several neuropsychiatric diseases, including autism, dyslexia, and schizophrenia. Multiple studies in fibroblasts then confirmed that Dock4 is capable of controlling cell migration by transducing several upstream signals, such as Wnt, platelet-derived growth factor, and RhoG, toward activation of Rac1. Mutations in this gene have been associated with ovarian, prostate, glioma, and colorectal cancers.

Storage

Storage:

Store at -20°C. Avoid exposure to light. Stable for one year after shipment.

Storage Buffer:

PBS with 50% Glycerol, 0.05% Proclin300, 0.5% BSA, pH 7.3.

Aliquoting is unnecessary for -20°C storage

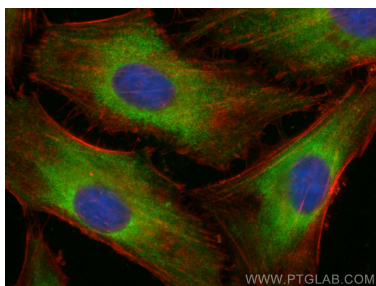
For technical support and original validation data for this product please contact:

T: 1 (888) 4PTGLAB (1-888-478-4522) (toll free in USA), or 1(312) 455-8498 (outside USA)

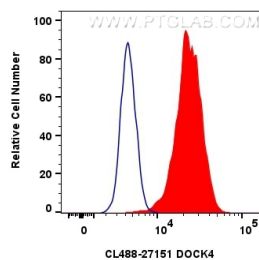
E: proteintech@ptglab.com
W: ptglab.com

This product is exclusively available under Proteintech Group brand and is not available to purchase from any other manufacturer.

Selected Validation Data



Immunofluorescent analysis of (-20°C Ethanol) fixed HeLa cells using Coralite® Plus 488 DOCK4 antibody (CL488-27151) at dilution of 1:200, CL594-phalloidin (red).



1x10⁶ HeLa cells were intracellularly stained with 0.8 ug Coralite® Plus 488 Anti-Human DOCK4 (CL488-27151)(red), or 0.8 ug Coralite® Plus 488-conjugated Rabbit IgG control Rabbit PolyAb (CL488-30000) (blue). Cells were fixed with 4% PFA and permeabilized with Flow Cytometry Perm Buffer (PF00011-C).