

For Research Use Only

CoraLite® Plus 488-conjugated KIF2A Polyclonal antibody

Catalog Number: CL488-27218

Featured Product



Basic Information

Catalog Number:

CL488-27218

Size:

100ul , Concentration: 1000 ug/ml by Nanodrop;

Source:

Rabbit

Isotype:

IgG

Immunogen Catalog Number:

AG25692

GenBank Accession Number:

BC031828

GeneID (NCBI):

3796

UNIPROT ID:

O00139

Full Name:

kinesin heavy chain member 2A

Calculated MW:

679 aa, 77 kDa

Observed MW:

80 kDa~100 kDa

Purification Method:

Antigen affinity purification

Recommended Dilutions:

IF/ICC 1:50-1:500

Excitation/Emission maxima wavelengths:

493 nm / 522 nm

Applications

Tested Applications:

IF/ICC

Species Specificity:

human, mouse

Positive Controls:

IF/ICC : A549 cells, HeLa cells

Background Information

Kinesin Family Member 2A (KIF2A), also known as Kinesin-2, is a member of the kinesin-13 superfamily protein. KIF2A is a microtubule-depolymerizing kinesin motor protein with essential roles in neural progenitor division and axonal pruning during brain development. KIF2A is involved in microtubule depolymerization at minus ends of the spindle to generate pole-migration forces for chromosome movement. KIF2A is a crucial factor in the invasion and metastasis of various tumors, such as gastric cancer(PMID: 32801897), hepatocellular carcinoma(PMID: 36277155).

Storage

Storage:

Store at -20°C. Avoid exposure to light. Stable for one year after shipment.

Storage Buffer:

PBS with 50% Glycerol, 0.05% Proclin300, 0.5% BSA, pH 7.3.

Aliquoting is unnecessary for -20°C storage

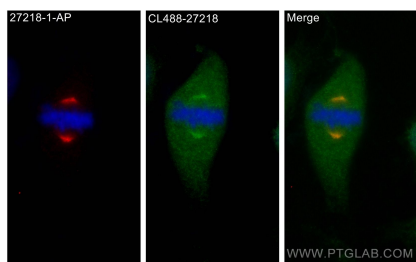
For technical support and original validation data for this product please contact:

T: 1 (888) 4PTGLAB (1-888-478-4522) (toll free in USA), or 1(312) 455-8498 (outside USA)

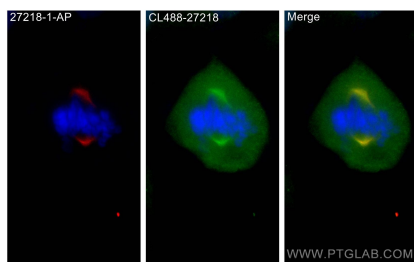
E: proteintech@ptglab.com
W: ptglab.com

This product is exclusively available under Proteintech Group brand and is not available to purchase from any other manufacturer.

Selected Validation Data



Immunofluorescent analysis of (4% PFA) fixed HeLa cells using CoraLite® Plus 488 KIF2A antibody (CL488-27218) at dilution of 1:200.



Immunofluorescent analysis of (4% PFA) fixed A549 cells using CoraLite® Plus 488 KIF2A antibody (CL488-27218) at dilution of 1:200.