

For Research Use Only

# CoraLite® Plus 488-conjugated Occludin Polyclonal antibody



Catalog Number: CL488-27260

## Basic Information

<b>Catalog Number:</b> CL488-27260	<b>GenBank Accession Number:</b> BC029886	<b>Purification Method:</b> Antigen affinity purification
<b>Size:</b> 100ul , Concentration: 1000 µg/ml by Nanodrop;	<b>GeneID (NCBI):</b> 4950	<b>Recommended Dilutions:</b> IF 1:400-1:1600
<b>Source:</b> Rabbit	<b>Full Name:</b> occludin	<b>Excitation/Emission maxima wavelengths:</b> 488 nm / 515 nm
<b>Isotype:</b> IgG	<b>Calculated MW:</b> 522 aa, 59 kDa	
<b>Immunogen Catalog Number:</b> AG26173		

## Applications

<b>Tested Applications:</b> FC (Intra), IF	<b>Positive Controls:</b> IF : MCF-7 cells, Caco-2 cells
<b>Species Specificity:</b> human	

## Background Information

Occludin is an integral membrane protein located at the tight junction. It is a tetraspanin protein with four transmembrane domains, intracellular N and C termini and two extracellular loops. Occludin plays a role in the formation and regulation of the tight junction paracellular permeability barrier. Occludin can exist in different isoforms, owing to modifications at the posttranscriptional and posttranslational levels, the monomeric occludin migrates as 53-65 kDa on SDS-PAGE (PMID: 22083955; 19457074).

## Storage

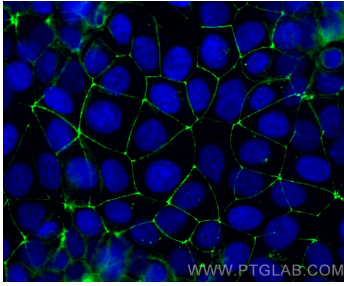
**Storage:**  
Store at -20°C. Avoid exposure to light.  
**Storage Buffer:**  
PBS with 50% Glycerol, 0.05% Proclin300, 0.5% BSA, pH 7.3.  
Aliquoting is unnecessary for -20°C storage

\*\*\* 20ul sizes contain 0.1% BSA

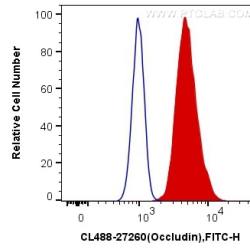
For technical support and original validation data for this product please contact:  
T: 1 (888) 4PTGLAB (1-888-478-4522) (toll free in USA), or 1(312) 455-8498 (outside USA)  
E: [proteintech@ptglab.com](mailto:proteintech@ptglab.com)  
W: [ptglab.com](http://ptglab.com)

This product is exclusively available under Proteintech Group brand and is not available to purchase from any other manufacturer.

## Selected Validation Data



Immunofluorescent analysis of (4% PFA) fixed MCF-7 cells using CoraLite® Plus 488 Occludin antibody (CL488-27260) at dilution of 1:800.



1X10<sup>6</sup> MCF-7 cells were intracellularly stained with 0.4 ug CoraLite® Plus 488 Anti-Human Occludin (CL488-27260) (red), or 0.4 ug Control Antibody. Cells were fixed with 4% PFA and permeabilized with Flow Cytometry Perm Buffer (PF00011-C).