

For Research Use Only

CoraLite® Plus 488-conjugated RAB5B Polyclonal antibody

Catalog Number: CL488-27403

Featured Product



Basic Information

Catalog Number:

CL488-27403

Size:

100ul , Concentration: 1000 ug/ml by Nanodrop;

Source:

Rabbit

Isotype:

IgG

Immunogen Catalog Number:

AG26584

GenBank Accession Number:

BC032740

GeneID (NCBI):

5869

UNIPROT ID:

P61020

Full Name:

RAB5B, member RAS oncogene family

Calculated MW:

215 aa, 24 kDa

Observed MW:

27 kDa

Purification Method:

Antigen affinity purification

Recommended Dilutions:

IF/ICC 1:50-1:500

Excitation/Emission maxima wavelengths:

493 nm / 522 nm

Applications

Tested Applications:

IF/ICC, FC (Intra)

Species Specificity:

human, mouse

Positive Controls:

IF/ICC : NIH/3T3 cells,

Background Information

RAB5B (Ras-related protein Rab-5B) belongs to the Rab family. Rab5 is specifically localized to the early compartment and regulates endocytosis (PMID:1516130, PMID:9087439). There are three isoforms of Rab5 namely, Rab5a, Rab5b, and Rab5c present in EE of mammalian cells (PMID:7789520). Recently, we have shown that Rab5a regulates fluid-phase endocytosis whereas receptor-mediated endocytosis is regulated by Rab5b in Leishmania (PMID:27226564).

Storage

Storage:

Store at -20°C. Avoid exposure to light. Stable for one year after shipment.

Storage Buffer:

PBS with 50% Glycerol, 0.05% Proclin300, 0.5% BSA, pH 7.3.

Aliquoting is unnecessary for -20°C storage

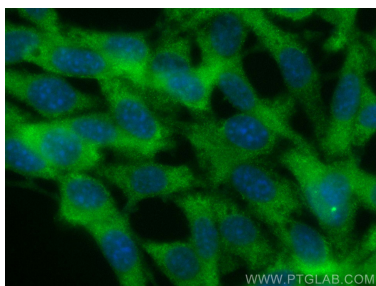
For technical support and original validation data for this product please contact:

T: 1 (888) 4PTGLAB (1-888-478-4522) (toll free in USA), or 1(312) 455-8498 (outside USA)

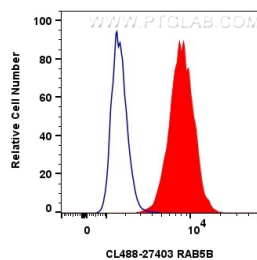
E: proteintech@ptglab.com
W: ptglab.com

This product is exclusively available under Proteintech Group brand and is not available to purchase from any other manufacturer.

Selected Validation Data



Immunofluorescent analysis of (-20°C Ethanol) fixed NIH/3T3 cells using CoraLite® Plus 488 RAB5B antibody (CL488-27403) at dilution of 1:200.



1x10⁶ NIH/3T3 cells were intracellularly stained with 0.4 ug CoraLite® Plus 488 Rab5b Polyclonal Antibody (CL488-27403)(red), or 0.4 ug CoraLite® Plus 488-conjugated Rabbit IgG control Rabbit PolyAb (CL488-30000) (blue). Cells were fixed with 4% PFA and permeabilized with Flow Cytometry Perm Buffer (PF00011-C).