

For Research Use Only

# CoraLite® Plus 488-conjugated NPPA Polyclonal antibody



Catalog Number: CL488-27426

## Basic Information

<b>Catalog Number:</b> CL488-27426	<b>GenBank Accession Number:</b> BC005893	<b>Purification Method:</b> Antigen affinity purification
<b>Size:</b> 100ul , Concentration: 1000 µg/ml by Nanodrop;	<b>GeneID (NCBI):</b> 4878	<b>Recommended Dilutions:</b> IF 1:50-1:500
<b>Source:</b> Rabbit	<b>UNIPROT ID:</b> P01160	<b>Excitation/Emission maxima wavelengths:</b> 493 nm / 522 nm
<b>Isotype:</b> IgG	<b>Full Name:</b> natriuretic peptide precursor A	
<b>Immunogen Catalog Number:</b> AG26692	<b>Calculated MW:</b> 153 aa, 17 kDa	
	<b>Observed MW:</b> 19 kDa	

## Applications

<b>Tested Applications:</b> IF	<b>Positive Controls:</b> IF : C2C12 cells,
<b>Species Specificity:</b> human, mouse, rat	

## Background Information

Natriuretic peptide precursor-A (NPPA) is an early and specific marker for functional myocardium of the embryonic heart. This protein is synthesized as a large precursor (containing a signal peptide), which is processed to release a peptide from the N-terminus with similarity to vasoactive peptide, cardiodilatin, and another peptide from the C-terminus with natriuretic-diuretic activity. NPPA is expressed primarily in the heart, where the expression level is higher in atria than ventricles. Low levels of ANP expression have been detected in other tissues, including the lung, aorta, brain, adrenal gland, kidney and uterus.

## Storage

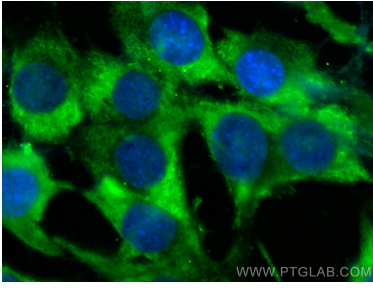
**Storage:**  
Store at -20°C. Avoid exposure to light. Stable for one year after shipment.  
**Storage Buffer:**  
PBS with 50% Glycerol, 0.05% Proclin300, 0.5% BSA, pH 7.3.  
Aliquoting is unnecessary for -20°C storage

\*\*\* 20ul sizes contain 0.1% BSA

For technical support and original validation data for this product please contact:  
T: 1 (888) 4PTGLAB (1-888-478-4522) (toll free in USA), or 1(312) 455-8498 (outside USA)  
E: proteintech@ptglab.com  
W: ptglab.com

This product is exclusively available under Proteintech Group brand and is not available to purchase from any other manufacturer.

## Selected Validation Data



Immunofluorescent analysis of (-20°C Methanol) fixed C2C12 cells using CoraLite® Plus 488 NPPA antibody (CL488-27426) at dilution of 1:200.