

For Research Use Only

# CoraLite® Plus 488-conjugated IRE1; ERN1 Polyclonal antibody



Catalog Number: CL488-27528

## Basic Information

<b>Catalog Number:</b> CL488-27528	<b>GenBank Accession Number:</b> BC130405	<b>Purification Method:</b> Antigen affinity purification
<b>Size:</b> 100ul , Concentration: 1000 µg/ml by Nanodrop;	<b>GeneID (NCBI):</b> 2081	<b>Excitation/Emission maxima wavelengths:</b> 493 nm / 522 nm
<b>Source:</b> Rabbit	<b>UNIPROT ID:</b> O75460	
<b>Isotype:</b> IgG	<b>Full Name:</b> endoplasmic reticulum to nucleus signaling 1	
<b>Immunogen Catalog Number:</b> AG25580	<b>Calculated MW:</b> 977 aa, 110 kDa	
	<b>Observed MW:</b> 130 kDa	

## Applications

**Tested Applications:**  
FC (Intra)

**Species Specificity:**  
Human

## Background Information

Inositol-requiring enzyme 1 (IRE1) is an ER transmembrane sensor that activates the UPR to maintain the ER and cellular function. Although mammalian IRE1 promotes cell survival, it can initiate apoptosis via decay of antiapoptotic miRNAs. IRE1 contains a ribonuclease domain in its cytoplasmic region which initiates splicing reaction by direct cleavage of XBP1 mRNA at the two stem loop structures. IRE1 plays instrumental protumoral roles in several cancers, and high IRE1 activity has been associated with poorer prognoses. (PMID: 23880584, PMID: 32861679, PMID: 31875595)

## Storage

**Storage:**  
Store at -20°C. Avoid exposure to light. Stable for one year after shipment.

**Storage Buffer:**  
PBS with 50% Glycerol, 0.05% Proclin300, 0.5% BSA, pH 7.3.

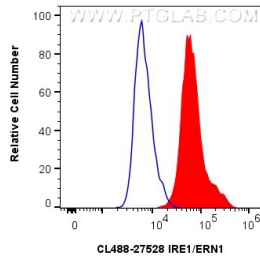
Aliquoting is unnecessary for -20°C storage

\*\*\* 20ul sizes contain 0.1% BSA

For technical support and original validation data for this product please contact:  
T: 1 (888) 4PTGLAB (1-888-478-4522) (toll free in USA), or 1(312) 455-8498 (outside USA)  
E: proteintech@ptglab.com  
W: ptglab.com

This product is exclusively available under Proteintech Group brand and is not available to purchase from any other manufacturer.

## Selected Validation Data



1x10<sup>6</sup> A549 cells were intracellularly stained with 0.8 ug CoraLite® Plus 488 Anti-Human IRE1; ERN1 (CL488-27528)(red), or 0.8 ug CoraLite® Plus 488-conjugated Rabbit IgG control Rabbit PolyAb (CL488-30000) (blue). Cells were fixed with 4% PFA and permeabilized with Flow Cytometry Perm Buffer (PF00011-C).