

For Research Use Only

# CoraLite® Plus 488-conjugated ELA2 Polyclonal antibody

Catalog Number: CL488-27642



## Basic Information

Catalog Number:

CL488-27642

Size:

100ul , Concentration: 1000 ug/ml by Nanodrop;

Source:

Rabbit

Isotype:

IgG

Immunogen Catalog Number:

AG26634

GenBank Accession Number:

BC074816

GeneID (NCBI):

1991

UNIPROT ID:

P08246

Full Name:

elastase 2, neutrophil

Calculated MW:

267 aa, 29 kDa

Observed MW:

29 kDa

Purification Method:

Antigen affinity purification

Recommended Dilutions:

IF/ICC 1:50-1:500

Excitation/Emission maxima wavelengths:

493 nm / 522 nm

## Applications

Tested Applications:

IF/ICC

Species Specificity:

human

Positive Controls:

IF/ICC : HEK-293 cells,

## Background Information

ELA2 (Neutrophil elastase) is also named as ELAL, NE, HLE, HNE, PMN-E, SERP1, GE, ELANE and belongs to the peptidase S1 family. It is a 33-kDa enzyme with several isoforms that differ in their extent of glycosylation (PMID:12223222). Human neutrophil elastase (HNE) is a serine protease with potent proteolytic activity (3), which is reported to cause mucin secretion (degranulation) (PMID:12169572). It may contribute to the directed migration of leukocytes into flamed postcapillary venules in addition to contributing to the process of tissue emigration (PMID:9683424). The full length protein has a signal peptide, propeptide and three glycosylation sites.

## Storage

Storage:

Store at -20°C. Avoid exposure to light. Stable for one year after shipment.

Storage Buffer:

PBS with 50% Glycerol, 0.05% Proclin300, 0.5% BSA, pH 7.3.

Aliquoting is unnecessary for -20°C storage

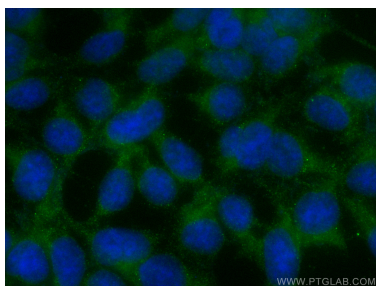
For technical support and original validation data for this product please contact:

T: 1 (888) 4PTGLAB (1-888-478-4522) (toll free in USA), or 1(312) 455-8498 (outside USA)

E: [proteintech@ptglab.com](mailto:proteintech@ptglab.com)  
W: [ptglab.com](http://ptglab.com)

This product is exclusively available under Proteintech Group brand and is not available to purchase from any other manufacturer.

## Selected Validation Data



Immunofluorescent analysis of (-20°C Ethanol) fixed HEK-293 cells using CoraLite® Plus 488 ELA2 antibody (CL488-27642) at dilution of 1:100.