

For Research Use Only

CoraLite® Plus 488-conjugated SLC26A2 Polyclonal antibody

Catalog Number:CL488-27759



Basic Information

Catalog Number:

CL488-27759

Size:

100ul , Concentration: 1000 ug/ml by
Nanodrop;

Source:

Rabbit

Isotype:

IgG

Immunogen Catalog Number:

AG26521

GenBank Accession Number:

BC059390

GeneID (NCBI):

1836

UNIPROT ID:

P50443

Full Name:

solute carrier family 26 (sulfate
transporter), member 2

Calculated MW:

82 kDa

Observed MW:

68 kDa

Purification Method:

Antigen affinity purification

**Excitation/Emission maxima
wavelengths:**

493 nm / 522 nm

Applications

Tested Applications:

FC (Intra)

Species Specificity:

human, mouse, rat

Storage

Storage:

Store at -20°C. Avoid exposure to light. Stable for one year after shipment.

Storage Buffer:

PBS with 50% Glycerol, 0.05% Proclin300, 0.5% BSA, pH 7.3.

Aliquoting is unnecessary for -20°C storage

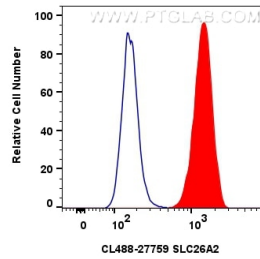
For technical support and original validation data for this product please contact:

T: 1 (888) 4PTGLAB (1-888-478-4522) (toll free
in USA), or 1(312) 455-8498 (outside USA)

E: proteintech@ptglab.com
W: ptglab.com

This product is exclusively available under Proteintech
Group brand and is not available to purchase from any
other manufacturer.

Selected Validation Data



1x10⁶ U2OS cells were intracellularly stained with 0.8 ug Coralite® Plus 488 SLC26a2 Polyclonal Antibody (CL488-27759) (red), or 0.8 ug Coralite® Plus 488-conjugated Rabbit IgG control Rabbit PolyAb (CL488-30000) (blue). Cells were fixed with 4% PFA and permeabilized with Flow Cytometry Perm Buffer (PF00011-C).