

For Research Use Only

CoraLite® Plus 488-conjugated RanBP1 Polyclonal antibody

Catalog Number: CL488-27804



Basic Information

Catalog Number:

CL488-27804

Size:

100ul , Concentration: 1000 ug/ml by Nanodrop;

Source:

Rabbit

Isotype:

IgG

Immunogen Catalog Number:

AG25714

GenBank Accession Number:

GeneID (NCBI):

5902

UNIPROT ID:

P43487

Full Name:

RAN binding protein 1

Observed MW:

28 kDa

Purification Method:

Antigen affinity purification

Recommended Dilutions:

IF/ICC 1:50-1:500

Excitation/Emission maxima wavelengths:

493 nm / 522 nm

Applications

Tested Applications:

IF/ICC, FC (Intra)

Species Specificity:

human, mouse

Positive Controls:

IF/ICC : NIH/3T3 cells, HeLa cells

Background Information

RanBP1 (Ran-binding protein 1) belongs to the RANBP1 family. RanBP1 plays a role in RAN-dependent nucleocytoplasmic transport. It alleviates the TNPO1-dependent inhibition of RAN GTPase activity and mediates the dissociation of RAN from proteins involved in transport into the nucleus. And RanBP1 induces a conformation change in the complex formed by XPO1 and RAN that triggers the release of the nuclear export signal of cargo proteins (PMID:20485264). RanBP1 promotes dissociation of RAN from a complex with KPNA2 and CSE1L. It required for normal mitotic spindle assembly and normal progress through mitosis via its effect on RAN (PMID:17671426). Also, RanBP1 inhibits RCC1-dependent exchange of RAN-bound GDP by GTP (PMID:7882974, PMID:7616957).

Storage

Storage:

Store at -20°C. Avoid exposure to light. Stable for one year after shipment.

Storage Buffer:

PBS with 50% Glycerol, 0.05% Proclin300, 0.5% BSA, pH 7.3.

Aliquoting is unnecessary for -20°C storage

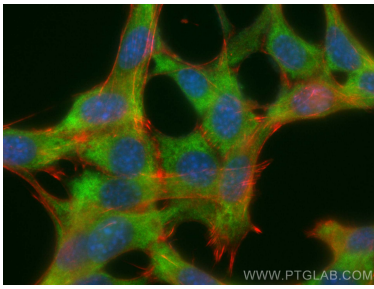
For technical support and original validation data for this product please contact:

T: 1 (888) 4PTGLAB (1-888-478-4522) (toll free in USA), or 1(312) 455-8498 (outside USA)

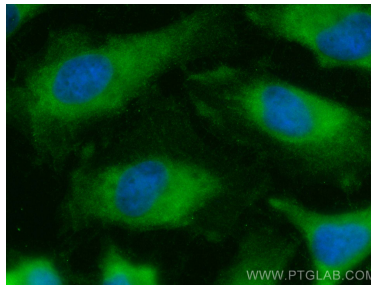
E: proteintech@ptglab.com
W: ptglab.com

This product is exclusively available under Proteintech Group brand and is not available to purchase from any other manufacturer.

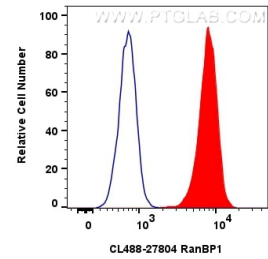
Selected Validation Data



Immunofluorescent analysis of (-20°C Ethanol) fixed NIH/3T3 cells using CoraLite® Plus 488 RanBP1 antibody (CL488-27804) at dilution of 1:200, CL594-phalloidin (red).



Immunofluorescent analysis of (-20°C Ethanol) fixed HeLa cells using CoraLite® Plus 488 RanBP1 antibody (CL488-27804) at dilution of 1:200.



1x10⁶ HeLa cells were intracellularly stained with 0.8 ug CoraLite® Plus 488-conjugated RanBP1 Polyclonal antibody (CL488-27804)(red), or 0.8 ug CoraLite® Plus 488-conjugated Rabbit IgG control Rabbit PolyAb (CL488-30000) (blue). Cells were fixed with 4% PFA and permeabilized with Flow Cytometry Perm Buffer (PF00011-C).