

For Research Use Only

CoraLite® Plus 488-conjugated Cd68 Polyclonal antibody



Catalog Number:CL488-28058

Basic Information

Catalog Number: CL488-28058	GenBank Accession Number: NM_001291058	Purification Method: Antigen affinity purification
Size: 100ul , Concentration: 1000 µg/ml by Nanodrop;	GeneID (NCBI): 12514	Recommended Dilutions: IF 1:50-1:500
Source: Rabbit	Full Name: CD68 antigen	Excitation/Emission maxima wavelengths: 493 nm / 522 nm
Isotype: IgG	Calculated MW: 35 kDa	
Immunogen Catalog Number: AG27827	Observed MW: 100 kDa	

Applications

Tested Applications: IF	Positive Controls: IF : mouse spleen tissue,
Species Specificity: mouse	

Background Information

Mouse CD68 (also known as macrophage marker) is a type I transmembrane glycoprotein that is highly and specifically expressed by mouse tissue macrophages, and to a lesser extent by dendritic cells. It belongs to the lysosomal/endosomal-associated membrane glycoprotein (LAMP) family and primarily localizes to lysosomes and endosomes with a smaller fraction circulating to the cell surface. CD68 is also a member of the scavenger receptor family. It may play a role in phagocytic activities of tissue macrophages.

Storage

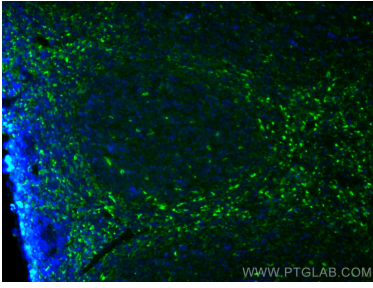
Storage:
Store at -20°C. Avoid exposure to light. Stable for one year after shipment.
Storage Buffer:
PBS with 50% Glycerol, 0.05% Proclin300, 0.5% BSA, pH 7.3.
Aliquoting is unnecessary for -20°C storage

*** 20ul sizes contain 0.1% BSA

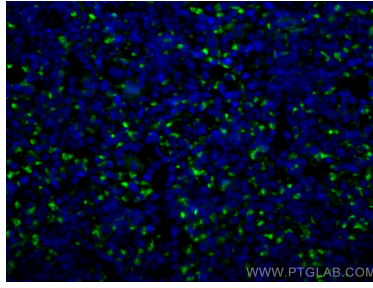
For technical support and original validation data for this product please contact:
T: 1 (888) 4PTGLAB (1-888-478-4522) (toll free in USA), or 1(312) 455-8498 (outside USA)
E: proteintech@ptglab.com
W: ptglab.com

This product is exclusively available under Proteintech Group brand and is not available to purchase from any other manufacturer.

Selected Validation Data



Immunofluorescent analysis of (4% PFA) fixed mouse spleen tissue using Coralite® Plus 488 Cd68 antibody (CL488-28058) at dilution of 1:200.



Immunofluorescent analysis of (4% PFA) fixed mouse spleen tissue using Coralite® Plus 488 Cd68 antibody (CL488-28058) at dilution of 1:200.