

For Research Use Only

CoraLite® Plus 488-conjugated PD-L1/CD274 (C-terminal) Polyclonal antibody



Catalog Number: **CL488-28076**

Featured Product

Basic Information

Catalog Number:
CL488-28076

Size:
100ul , Concentration: 1000 µg/ml by
Nanodrop;

Source:
Rabbit

Isotype:
IgG

Immunogen Catalog Number:
AG27557

GenBank Accession Number:
BC074984

GeneID (NCBI):
29126

UNIPROT ID:
Q9NZQ7

Full Name:
CD274 molecule

Calculated MW:
290 aa, 33 kDa

Observed MW:
45-50 kDa

Purification Method:
Antigen affinity purification

Recommended Dilutions:
IF 1:50-1:500

Excitation/Emission maxima
wavelengths:
493 nm / 522 nm

Applications

Tested Applications:

IF

Species Specificity:

Human, mouse, rat

Positive Controls:

IF : human placenta tissue,

Background Information

Programmed cell death ligand 1 (PD-L1, CD274, or B7-H1), is the first member of B7 family to be discovered. B7 family molecules are type I transmembrane proteins belonging to the immunoglobulin superfamily. In concert with their CD28 family receptors, the B7s are key regulators of the adaptive immune response. PD-L1 is suggested as a negative regulator of T and B cell, and plays important role in mediating tolerance of lymphocytes to self-antigens. It is also involved in the costimulatory signal, essential for T-cell proliferation and production of IL10 and IFNG, in an IL2-dependent and a PD-1-independent manner.

Storage

Storage:

Store at -20°C. Avoid exposure to light. Stable for one year after shipment.

Storage Buffer:

PBS with 50% Glycerol, 0.05% Proclin300, 0.5% BSA, pH 7.3.

Aliquoting is unnecessary for -20°C storage

*** 20ul sizes contain 0.1% BSA

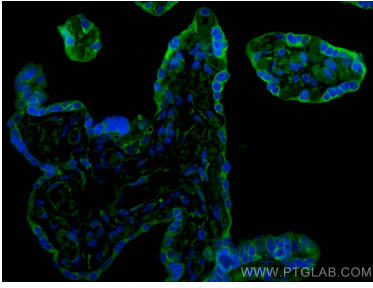
For technical support and original validation data for this product please contact:

T: 1 (888) 4PTGLAB (1-888-478-4522) (toll free
in USA), or 1(312) 455-8498 (outside USA)

E: proteintech@ptglab.com
W: ptglab.com

This product is exclusively available under Proteintech Group brand and is not available to purchase from any other manufacturer.

Selected Validation Data



Immunofluorescent analysis of (4% PFA) fixed paraffin-embedded human placenta tissue using CoraLite® Plus 488 PD-L1/CD274 (C-terminal) antibody (CL488-28076) at dilution of 1:200. Heat mediated antigen retrieval with Tris-EDTA buffer (pH 9.0).