

CoraLite® Plus 488-conjugated LIMD1 Polyclonal antibody

Catalog Number: CL488-28106

Basic Information

Catalog Number:

CL488-28106

Size:

100ul , Concentration: 1000 ug/ml by Nanodrop;

Source:

Rabbit

Isotype:

IgG

Immunogen Catalog Number:

AG27974

GenBank Accession Number:

NM_014240

GeneID (NCBI):

8994

UNIPROT ID:

Q9UGP4

Full Name:

LIM domains containing 1

Calculated MW:

72 aa

Observed MW:

72 kDa

Purification Method:

Antigen affinity purification

Recommended Dilutions:

IF/ICC 1:50-1:500

Excitation/Emission maxima wavelengths:

493 nm / 522 nm

Applications

Tested Applications:

IF/ICC

Species Specificity:

human

Positive Controls:

IF/ICC : A431 cells,

Background Information

LIMD1 is a member of the Ajuba family of LIM domain-containing proteins, these kinds of proteins have been shown to play a role in intracellular signaling, transcriptional regulation and cellular differentiation, proliferation and migration (PMID:17174104). LIMD1 predominantly localizes to the cytoplasm especially in the E-cadherin cell-cell adhesive junction, yet also translocates to the nucleus when functions as an RB corepressor (PMID:19060205). And LIMD1 acts as a scaffolding protein to form a PHD-LIMD1-VHL axis, facilitating HIF1 α ubiquitination and degradation by the proteasome (PMID:22800800). LIMD1 specifically interacts with retinoblastoma protein (pRB), inhibits E2F-mediated transcription, and suppresses the expression of the majority of genes with E2F1-responsive elements. As a tumor suppressor, LIMD1 blocks tumor growth in vitro and in vivo, and is frequently down-regulated in human lung tumors (PMID:15542589), and it also be detected in normal and breast cancer tissues. LIMD1 protein exists several phosphorylation sites, which may affect its theoretical molecular weight when tested. Proteintech's 28106-1-AP antibody was generated by 133 amino acids, it could recognize the full-length protein in applications.

Storage

Storage:

Store at -20°C. Avoid exposure to light. Stable for one year after shipment.

Storage Buffer:

PBS with 50% Glycerol, 0.05% Proclin300, 0.5% BSA, pH 7.3.

Aliquoting is unnecessary for -20°C storage

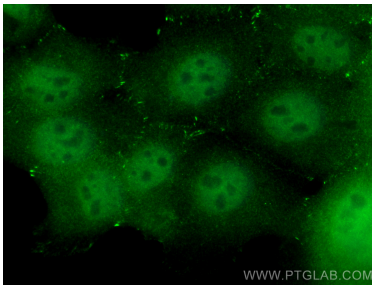
For technical support and original validation data for this product please contact:

T: 1 (888) 4PTGLAB (1-888-478-4522) (toll free in USA), or 1(312) 455-8498 (outside USA)

E: proteintech@ptglab.com
W: ptglab.com

This product is exclusively available under Proteintech Group brand and is not available to purchase from any other manufacturer.

Selected Validation Data



Immunofluorescent analysis of (4% PFA) fixed A431 cells using CoraLite® Plus 488 L1MD1 antibody (CL488-28106) at dilution of 1:200.