

For Research Use Only

CoraLite® Plus 488-conjugated F4/80 Polyclonal antibody

Catalog Number: CL488-28463



Basic Information

Catalog Number:

CL488-28463

Size:

100ul , Concentration: 1000 ug/ml by Nanodrop;

Source:

Rabbit

Isotype:

IgG

Immunogen Catalog Number:

AG28252

GenBank Accession Number:

NM_010130

GeneID (NCBI):

13733

UNIPROT ID:

Q61549

Full Name:

EGF-like module containing, mucin-like, hormone receptor-like sequence 1

Calculated MW:

102 kDa

Purification Method:

Antigen affinity purification

Recommended Dilutions:

IF-P 1:50-1:500

Excitation/Emission maxima wavelengths:

493 nm / 522 nm

Applications

Tested Applications:

IF-P

Species Specificity:

mouse

Positive Controls:

IF-P : mouse spleen tissue,

Background Information

Mouse F4/80, also named as EMR1 and Gpf480, is a 160kd cell surface glycoprotein which is a member of the EGF TM7 family. The F4/80 molecule is solely expressed on the surface of macrophages and serves as a marker for mature macrophage tissues, including Kupffer cells in liver, splenic red pulp macrophages, brain microglia, gut lamina propria and Langerhans cells in the skin. The function of F4/80 is unclear, but it is speculated to be involved in macrophage adhesion events, cell migration or as a G protein-coupled signaling component of macrophages.

Storage

Storage:

Store at -20°C. Avoid exposure to light. Stable for one year after shipment.

Storage Buffer:

PBS with 50% Glycerol, 0.05% Proclin300, 0.5% BSA, pH 7.3.

Aliquoting is unnecessary for -20°C storage

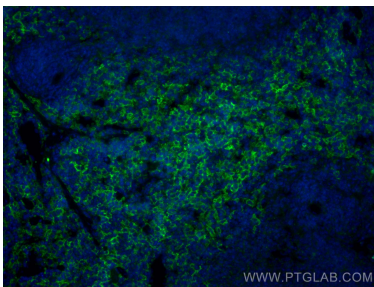
For technical support and original validation data for this product please contact:

T: 1 (888) 4PTGLAB (1-888-478-4522) (toll free in USA), or 1(312) 455-8498 (outside USA)

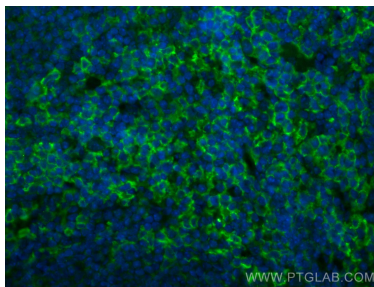
E: proteintech@ptglab.com
W: ptglab.com

This product is exclusively available under Proteintech Group brand and is not available to purchase from any other manufacturer.

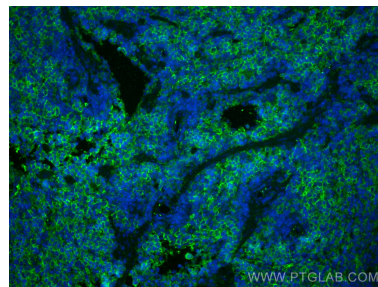
Selected Validation Data



Immunofluorescent analysis of (4% PFA) fixed paraffin-embedded mouse spleen tissue using CoraLite® Plus 488 F4/80 antibody (CL488-28463) at dilution of 1:200. Heat mediated antigen retrieval with Tris-EDTA buffer (pH 9.0).



Immunofluorescent analysis of (4% PFA) fixed paraffin-embedded mouse spleen tissue using CoraLite® Plus 488 F4/80 antibody (CL488-28463) at dilution of 1:200. Heat mediated antigen retrieval with Tris-EDTA buffer (pH 9.0).



Immunofluorescent analysis of (4% PFA) fixed paraffin-embedded mouse spleen tissue using CoraLite® Plus 488 F4/80 antibody (CL488-28463) at dilution of 1:200. Heat mediated antigen retrieval with Tris-EDTA buffer (pH 9.0).