

For Research Use Only



CoraLite® Plus 488-conjugated Alpha-2-antiplasmin Polyclonal antibody

Catalog Number: **CL488-28549**

Basic Information

Catalog Number: CL488-28549	GenBank Accession Number: BC031592	Purification Method: Antigen affinity purification
Size: 100ul , Concentration: 1000 µg/ml by Nanodrop;	GeneID (NCBI): 5345	Recommended Dilutions: IF 1:50-1:500
Source: Rabbit	UNIPROT ID: P08697	Excitation/Emission maxima wavelengths: 493 nm / 522 nm
Isotype: IgG	Full Name: serpin peptidase inhibitor, clade F (alpha-2 antiplasmin, pigment epithelium derived factor), member 2	
Immunogen Catalog Number: AG29670	Calculated MW: 491 aa, 55 kDa	
	Observed MW: 55 kDa	

Applications

Tested Applications: IF, FC (Intra)	Positive Controls: IF : HepG2 cells,
Species Specificity: Human, mouse, rat	

Background Information

SERPINF2, also termed Alpha-2-antiplasmin(a2-AP), a member of the serpin family of serine protease inhibitors. SERPINF2 is a major inhibitor of plasmin, which degrades fibrin and various other proteins. Consequently, the proper function of this gene has a major role in regulating the blood clotting pathway. Mutations in SERPINF2 result in alpha-2-plasmin inhibitor deficiency, which is characterized by severe hemorrhagic diathesis.

Storage

Storage:
Store at -20°C. Avoid exposure to light. Stable for one year after shipment.
Storage Buffer:
PBS with 50% Glycerol, 0.05% Proclin300, 0.5% BSA, pH 7.3.
Aliquoting is unnecessary for -20°C storage

*** 20ul sizes contain 0.1% BSA

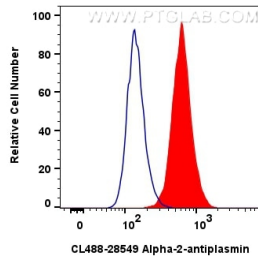
For technical support and original validation data for this product please contact:

T: 1 (888) 4PTGLAB (1-888-478-4522) (toll free in USA), or 1(312) 455-8498 (outside USA)

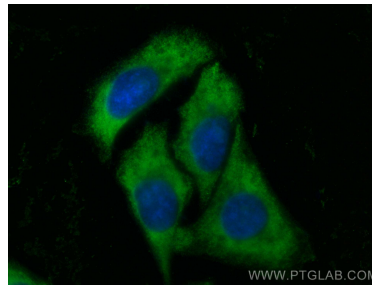
E: proteintech@ptglab.com
W: ptglab.com

This product is exclusively available under Proteintech Group brand and is not available to purchase from any other manufacturer.

Selected Validation Data



1x10⁶ HepG2 cells were intracellularly stained with 0.8 ug Coralite® Plus 488 Alpha-2-Antiplasmin Polyclonal Antibody (CL488-28549) (red), or 0.8 ug Coralite® Plus 488-conjugated Rabbit IgG control Rabbit PolyAb (CL488-30000) (blue). Cells were fixed with 4% PFA and permeabilized with Flow Cytometry Perm Buffer (PF00011-C).



Immunofluorescent analysis of (-20°C Ethanol) fixed HepG2 cells using Coralite® Plus 488 Alpha-2-antiplasmin antibody (CL488-28549) at dilution of 1:200.