

For Research Use Only

CoraLite® Plus 488-conjugated KCC2/SLC12A5 Polyclonal antibody

Catalog Number: CL488-28724



Basic Information

Catalog Number:

CL488-28724

Size:

100ul , Concentration: 1000 ug/ml by
Nanodrop;

Source:

Rabbit

Isotype:

IgG

Immunogen Catalog Number:

AG30203

GenBank Accession Number:

BC132670

GeneID (NCBI):

57468

UNIPROT ID:

Q9H2X9

Full Name:

solute carrier family 12 (potassium-
chloride transporter), member 5

Observed MW:

130-150 kDa

Purification Method:

Antigen affinity purification

Recommended Dilutions:

IF-P 1:50-1:500

Excitation/Emission maxima wavelengths:

493 nm / 522 nm

Applications

Tested Applications:

IF-P

Species Specificity:

Human, Mouse, Rat

Positive Controls:

IF-P : mouse cerebellum tissue,

Background Information

KCC2, encoded by SLC12A5, is a neuron-specific K⁺-Cl⁻ cotransporter that is essential for Cl⁻ homeostasis and inhibitory synaptic transmission in brain. KCC2 is expressed at high levels in neurons throughout the nervous system. KCC2 deletion caused animal death. Alterations of KCC2 have been linked to neuropathic pain, temporal lobe epilepsy, and other diseases.

Storage

Storage:

Store at -20°C. Avoid exposure to light. Stable for one year after shipment.

Storage Buffer:

PBS with 50% Glycerol, 0.05% Proclin300, 0.5% BSA, pH 7.3.

Aliquoting is unnecessary for -20°C storage

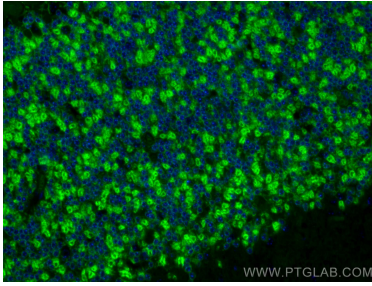
For technical support and original validation data for this product please contact:

T: 1 (888) 4PTGLAB (1-888-478-4522) (toll free
in USA), or 1(312) 455-8498 (outside USA)

E: proteintech@ptglab.com
W: ptglab.com

This product is exclusively available under Proteintech Group brand and is not available to purchase from any other manufacturer.

Selected Validation Data



Immunofluorescent analysis of (4% PFA) fixed mouse cerebellum tissue using CoraLite® Plus 488 KCC2/SLC12A5 antibody (CL488-28724) at dilution of 1:200.