

For Research Use Only

CoraLite® Plus 488-conjugated WIPI2 Polyclonal antibody

Catalog Number: CL488-28820



Basic Information

Catalog Number: CL488-28820	GenBank Accession Number: BC004116	Purification Method: Antigen affinity purification
Size: 100ul , Concentration: 1000 ug/ml by Nanodrop;	GeneID (NCBI): 26100	Recommended Dilutions: IF/ICC 1:50-1:500
Source: Rabbit	UNIPROT ID: Q9Y4P8	Excitation/Emission maxima wavelengths: 493 nm / 522 nm
Isotype: IgG	Full Name: WD repeat domain, phosphoinositide interacting 2	
Immunogen Catalog Number: AG30505	Calculated MW: 49 kDa	
	Observed MW: 49 kDa	

Applications

Tested Applications: IF/ICC	Positive Controls: IF/ICC : HeLa cells,
Species Specificity: human, mouse	

Background Information

WIPI2, the mammalian homologue of the yeast ATG18 gene, plays a key role in autophagy. It binds the omegasome, a phosphatidylinositol 3-phosphate (PI3P) rich domain of the endoplasmic reticulum from which the mature autophagosome develops. Western blotting detected a 49 kDa WIPI2 band.(PMID: 30968111, PMID: 30403914)

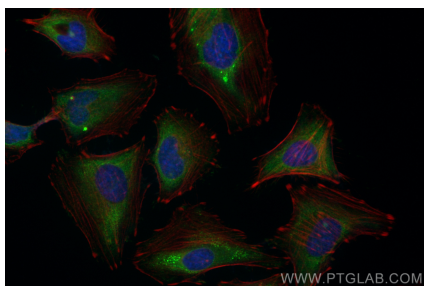
Storage

Storage:
Store at -20°C. Avoid exposure to light. Stable for one year after shipment.
Storage Buffer:
PBS with 50% Glycerol, 0.05% Proclin300, 0.5% BSA, pH 7.3.
Aliquoting is unnecessary for -20°C storage

For technical support and original validation data for this product please contact:
T: 1 (888) 4PTGLAB (1-888-478-4522) (toll free in USA), or 1(312) 455-8498 (outside USA)
E: proteintech@ptglab.com
W: ptglab.com

This product is exclusively available under Proteintech Group brand and is not available to purchase from any other manufacturer.

Selected Validation Data



Immunofluorescent analysis of (-20°C Ethanol)
fixed HeLa cells using CoraLite® Plus 488 WPI12
antibody (CL488-28820) at dilution of 1:200.