

For Research Use Only

CoraLite® Plus 488-conjugated Parvalbumin Polyclonal antibody



Catalog Number: CL488-29312

Basic Information

Catalog Number: CL488-29312	GenBank Accession Number: NM_002854	Purification Method: Antigen affinity purification
Size: 100ul , Concentration: 1000 µg/ml by Nanodrop;	GeneID (NCBI): 5816	Recommended Dilutions: IF 1:50-1:500
Source: Rabbit	Full Name: parvalbumin	Excitation/Emission maxima wavelengths: 493 nm / 522 nm
Isotype: IgG	Calculated MW: 12 kDa	
Immunogen Catalog Number: AG30189		

Applications

Tested Applications: IF	Positive Controls: IF : mouse cerebellum tissue,
Species Specificity: Human, mouse, rat	

Background Information

PVALB is a high affinity calcium ion-binding protein that is structurally and functionally similar to calmodulin and troponin C. PVALB is expressed in high levels only in fast-contracting muscles and at lower levels in brain and several endocrine tissues. It is thought to be involved in muscle relaxation.

Storage

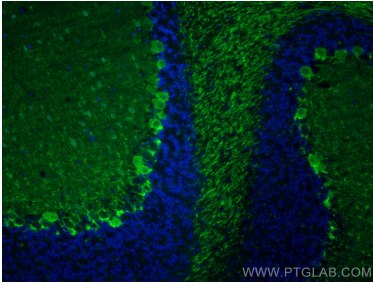
Storage:
Store at -20°C. Avoid exposure to light. Stable for one year after shipment.
Storage Buffer:
PBS with 50% Glycerol, 0.05% Proclin300, 0.5% BSA, pH 7.3.
Aliquoting is unnecessary for -20°C storage

***** 20ul sizes contain 0.1% BSA**

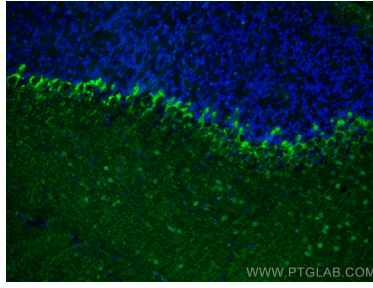
For technical support and original validation data for this product please contact:
T: 1 (888) 4PTGLAB (1-888-478-4522) (toll free in USA), or 1(312) 455-8498 (outside USA)
E: proteintech@ptglab.com
W: ptglab.com

This product is exclusively available under Proteintech Group brand and is not available to purchase from any other manufacturer.

Selected Validation Data



Immunofluorescent analysis of (4% PFA) fixed mouse cerebellum tissue using CoraLite® Plus 488 Parvalbumin antibody (CL488-29312) at dilution of 1:200.



Immunofluorescent analysis of (4% PFA) fixed mouse cerebellum tissue using CoraLite® Plus 488 Parvalbumin antibody (CL488-29312) at dilution of 1:200.