

For Research Use Only

CoraLite® Plus 488-conjugated Rabbit IgG control Polyclonal antibody

Catalog Number: CL488-30000

1 Publications



Basic Information

Catalog Number:

CL488-30000

GenBank Accession Number:

GeneID (NCBI):

Size:

100ul , Concentration: 1000 µg/ml by Nanodrop;

Full Name:

Source:

Rabbit

Isotype:

IgG

Purification Method:

N/A

Excitation/Emission maxima wavelengths:

493 nm / 522 nm

Applications

Tested Applications:

FC (Intra)

Cited Applications:

IF

Species Specificity:

n/a

Background Information

This product is Normal rabbit IgG (without immunized) which purified with Protein A. Normal Rabbit IgG is an isotype control antibody, which is used to estimate the non-specific binding of target primary antibodies due to Fc receptor binding or other protein-protein interactions. An isotype control antibody should have the same immunoglobulin type and be used at the same concentration as the test antibody.

Notable Publications

Author	Pubmed ID	Journal	Application
Fei Tang	37607536	Cell	IF

Storage

Storage:

Store at -20°C. Avoid exposure to light. Stable for one year after shipment.

Storage Buffer:

PBS with 50% Glycerol, 0.05% Proclin300, 0.5% BSA, pH 7.3.

Aliquoting is unnecessary for -20°C storage

For technical support and original validation data for this product please contact:

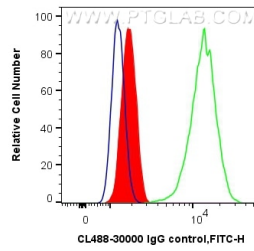
T: 1 (888) 4PTGLAB (1-888-478-4522) (toll free in USA), or 1(312) 455-8498 (outside USA)

E: proteintech@ptglab.com

W: ptglab.com

This product is exclusively available under Proteintech Group brand and is not available to purchase from any other manufacturer.

Selected Validation Data



1×10^6 HeLa cells were intracellularly stained with 0.2 μ g CoraLite® Plus 488 Anti-Rabbit IgG control (CL488-30000) (red), or 0.2 μ g CoraLite® Plus 488-conjugated Galectin-3 Rabbit PolyAb (CL488-14979) (green), or unstained (blue). Cells were fixed with 4% PFA and permeabilized with Flow Cytometry Perm Buffer (PF00011-C).