

For Research Use Only

# CoraLite® Plus 488-conjugated RIF1 Polyclonal antibody

Catalog Number: CL488-30119



## Basic Information

### Catalog Number:

CL488-30119

### Size:

100ul , Concentration: 1000 ug/ml by Nanodrop;

### Source:

Rabbit

### Isotype:

IgG

### Immunogen Catalog Number:

AG32422

### GenBank Accession Number:

NM\_001177663.1

### GeneID (NCBI):

55183

### UNIPROT ID:

Q5UIPO

### Full Name:

RAP1 interacting factor homolog (yeast)

### Calculated MW:

274 kDa

### Observed MW:

300 kDa

### Purification Method:

Antigen affinity purification

### Recommended Dilutions:

IF/ICC 1:50-1:500

### Excitation/Emission maxima wavelengths:

493 nm / 522 nm

## Applications

### Tested Applications:

IF/ICC

### Species Specificity:

Human

### Positive Controls:

IF/ICC : HEK-293 cells, HeLa cells

## Background Information

RIF1 (Rap1-interacting factor 1) is a multifunctional chromosome stability protein implicated in controlling DNA replication and repair. Human RIF1 can interact with protein phosphatase 1 (PP1) and the interaction is crucial for controlling DNA replication by limiting phosphorylation of the MCM complex (PMID: 28077461). RIF1 also acts with PP1 to protect nascent DNA from overdegradation at stalled replication forks (PMID: 31141682). RIF1 promotes non-homologous end joining (NHEJ) in double strand break (DSB) repair (PMID: 30443189). Research studies show that RIF1 is overexpressed in breast cancer tissues and is upregulated in NSCLC tissues (PMID: 30237512).

## Storage

### Storage:

Store at -20°C. Avoid exposure to light. Stable for one year after shipment.

### Storage Buffer:

PBS with 50% Glycerol, 0.05% Proclin300, 0.5% BSA, pH 7.3.

Aliquoting is unnecessary for -20°C storage

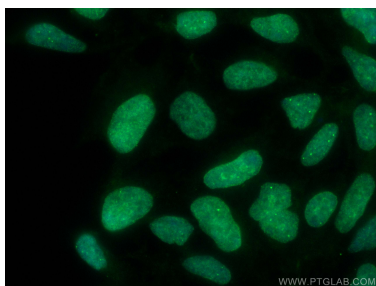
For technical support and original validation data for this product please contact:

T: 1 (888) 4PTGLAB (1-888-478-4522) (toll free in USA), or 1(312) 455-8498 (outside USA)

E: [proteintech@ptglab.com](mailto:proteintech@ptglab.com)  
W: [ptglab.com](http://ptglab.com)

This product is exclusively available under Proteintech Group brand and is not available to purchase from any other manufacturer.

## Selected Validation Data



Immunofluorescent analysis of (4% PFA) fixed HEK-293 cells using CoraLite® Plus 488 RIF1 antibody (CL488-30119) at dilution of 1:200.