

For Research Use Only

# CoraLite® Plus 488-conjugated EGFR Polyclonal antibody



Catalog Number: CL488-30139

## Basic Information

<b>Catalog Number:</b> CL488-30139	<b>GenBank Accession Number:</b> NM_005228.5	<b>Purification Method:</b> Antigen affinity purification
<b>Size:</b> 100ul , Concentration: 1000 µg/ml by Nanodrop;	<b>GeneID (NCBI):</b> 1956	<b>Recommended Dilutions:</b> IF 1:50-1:500
<b>Source:</b> Rabbit	<b>UNIPROT ID:</b> P00533	<b>Excitation/Emission maxima wavelengths:</b> 493 nm / 522 nm
<b>Isotype:</b> IgG	<b>Full Name:</b> epidermal growth factor receptor (erythroblastic leukemia viral (v-erb-b) oncogene homolog, avian)	
	<b>Calculated MW:</b> 134kd	
	<b>Observed MW:</b> 145-165 kDa	

## Applications

<b>Tested Applications:</b> IF, FC	<b>Positive Controls:</b> IF : A431 cells,
<b>Species Specificity:</b> Human	

## Background Information

EGFR is a receptor for EGF, but also for other members of the EGF family, as TGF- $\alpha$ , amphiregulin, betacellulin, heparin-binding EGF-like growth factor, GP30 and vaccinia virus growth factor. ERBB1 is involved in the control of cell growth and differentiation. Phosphorylates MUC1 in breast cancer cells and increases the interaction of MUC1 with C-SRC and CTNNB1/beta-catenin. Isoform 2/truncated isoform of ERBB1 may act as an antagonist. EGFR is associated with lung cancer.

## Storage

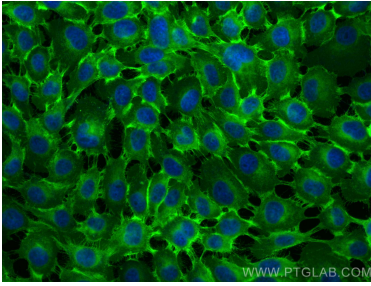
**Storage:**  
Store at -20°C. Avoid exposure to light. Stable for one year after shipment.  
**Storage Buffer:**  
PBS with 50% Glycerol, 0.05% Proclin300, 0.5% BSA, pH 7.3.  
Aliquoting is unnecessary for -20°C storage

\*\*\* 20ul sizes contain 0.1% BSA

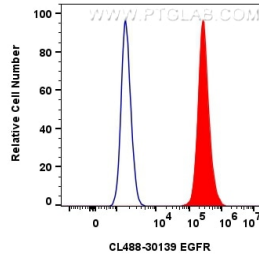
For technical support and original validation data for this product please contact:  
T: 1 (888) 4PTGLAB (1-888-478-4522) (toll free in USA), or 1(312) 455-8498 (outside USA)  
E: proteintech@ptglab.com  
W: ptglab.com

This product is exclusively available under Proteintech Group brand and is not available to purchase from any other manufacturer.

## Selected Validation Data



Immunofluorescent analysis of (-20°C Methanol) fixed A431 cells using Coralite® Plus 488 EGFR antibody (CL488-30139) at dilution of 1:200.



1x10<sup>6</sup> A431 cells were intracellularly stained with 0.4 ug Coralite® Plus 488 EGFR Polyclonal Antibody (CL488-30139)(red), or 0.4 ug Coralite® Plus 488-conjugated Rabbit IgG control Rabbit PolyAb (CL488-30000) (blue). Cells were not fixed.