

For Research Use Only

CoraLite® Plus 488-conjugated LRRC50 Polyclonal antibody

Catalog Number: CL488-30156



Basic Information

Catalog Number:

CL488-30156

Size:

100ul , Concentration: 1000 ug/ml by Nanodrop;

Source:

Rabbit

Isotype:

IgG

Immunogen Catalog Number:

AG32822

GenBank Accession Number:

BC024009

GeneID (NCBI):

123872

UNIPROT ID:

Q8NEP3

Full Name:

leucine rich repeat containing 50

Calculated MW:

725 aa, 80 kDa

Purification Method:

Antigen affinity purification

Recommended Dilutions:

IF-P 1:50-1:500

Excitation/Emission maxima wavelengths:

493 nm / 522 nm

Applications

Tested Applications:

IF-P

Species Specificity:

Human, mouse

Positive Controls:

IF-P: mouse testis tissue,

Background Information

LRRC50 is a cilium-specific protein required for the stability of the ciliary architecture, it plays a role in cytoplasmic preassembly of dynein arms.

Storage

Storage:

Store at -20°C. Avoid exposure to light. Stable for one year after shipment.

Storage Buffer:

PBS with 50% Glycerol, 0.05% Proclin300, 0.5% BSA, pH 7.3.

Aliquoting is unnecessary for -20°C storage

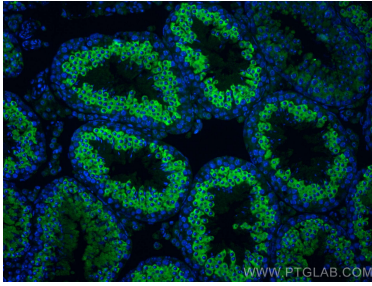
For technical support and original validation data for this product please contact:

T: 1 (888) 4PTGLAB (1-888-478-4522) (toll free in USA), or 1(312) 455-8498 (outside USA)

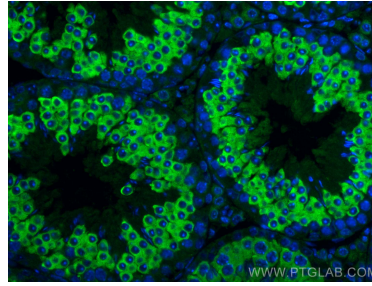
E: proteintech@ptglab.com
W: ptglab.com

This product is exclusively available under Proteintech Group brand and is not available to purchase from any other manufacturer.

Selected Validation Data



Immunofluorescent analysis of (4% PFA) fixed paraffin-embedded mouse testis tissue using CoraLite® Plus 488 LRRC50 antibody (CL488-30156) at dilution of 1:200. Heat mediated antigen retrieval with Tris-EDTA buffer (pH 9.0).



Immunofluorescent analysis of (4% PFA) fixed paraffin-embedded mouse testis tissue using CoraLite® Plus 488 LRRC50 antibody (CL488-30156) at dilution of 1:200. Heat mediated antigen retrieval with Tris-EDTA buffer (pH 9.0).