

For Research Use Only

CoraLite® Plus 488-conjugated SHMT1 Polyclonal antibody

Catalog Number: CL488-30192

Featured Product



Basic Information

Catalog Number:

CL488-30192

Size:

100ul, Concentration: 1000 ug/ml by Nanodrop;

Source:

Rabbit

Isotype:

IgG

Immunogen Catalog Number:

AG31269

GenBank Accession Number:

BC038598

GeneID (NCBI):

6470

UNIPROT ID:

P34896

Full Name:

serine hydroxymethyltransferase 1 (soluble)

Calculated MW:

483 aa, 53 kDa

Observed MW:

45-53 kDa

Purification Method:

Antigen affinity purification

Recommended Dilutions:

IF/ICC 1:50-1:500

Excitation/Emission maxima wavelengths:

493 nm / 522 nm

Applications

Tested Applications:

IF/ICC, FC (Intra)

Species Specificity:

human, mouse, rat

Positive Controls:

IF/ICC : HepG2 cells,

Background Information

SHMT1 is the cellular form of serine hydroxymethyltransferase, a pyridoxal phosphate-containing enzyme that catalyzes the reversible conversion of serine and tetrahydrofolate to glycine and 5,10-methylene tetrahydrofolate. Alternative splicing of this gene results in 2 transcript variants encoding 2 different isoforms. This antibody can detect both 49 kDa and 53 kDa isoforms in western blotting.

Storage

Storage:

Store at -20°C. Avoid exposure to light. Stable for one year after shipment.

Storage Buffer:

PBS with 50% Glycerol, 0.05% Proclin300, 0.5% BSA, pH 7.3.

Aliquoting is unnecessary for -20°C storage

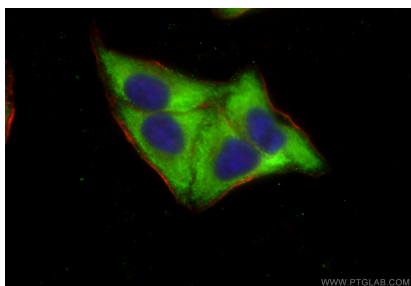
For technical support and original validation data for this product please contact:

T: 1 (888) 4PTGLAB (1-888-478-4522) (toll free in USA), or 1(312) 455-8498 (outside USA)

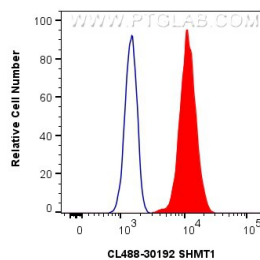
E: proteintech@ptglab.com
W: ptglab.com

This product is exclusively available under Proteintech Group brand and is not available to purchase from any other manufacturer.

Selected Validation Data



Immunofluorescent analysis of (-20°C Ethanol) fixed HepG2 cells using CoraLite® Plus 488 SHMT1 antibody (CL488-30192) at dilution of 1:200, CL594-Phalloidin (red).



1x10⁶ HeLa cells were intracellularly stained with 0.4 ug CoraLite® Plus 488-conjugated SHMT1 Polyclonal antibody (CL488-30192)(red), or 0.4 ug CoraLite® Plus 488-conjugated Rabbit IgG control Rabbit PolyAb (CL488-30000) (blue). Cells were fixed with 4% PFA and permeabilized with Flow Cytometry Perm Buffer (PF00011-C).