

For Research Use Only

CoraLite® Plus 488-conjugated GFP tag Polyclonal antibody

Catalog Number: CL488-50430



Basic Information

Catalog Number:

CL488-50430

GenBank Accession Number:

M62653

Purification Method:

Antigen affinity purification

Size:

100ul, Concentration: 1000 ug/ml by
Nanodrop;

GeneID (NCBI):

Full Name:

Recommended Dilutions:

IF-P 1:50-1:500

Source:

Rabbit

Calculated MW:

26 kDa

Excitation/Emission maxima wavelengths:

493 nm / 522 nm

Isotype:

IgG

Immunogen Catalog Number:

AG2128

Applications

Tested Applications:

IF-P

Positive Controls:

IF-P: mouse brain tissue,

Species Specificity:

aequorea victoria, recombinant protein

Background Information

Green Fluorescent Proteins (GFPs) encompass a diverse range of proteins carrying a green chromophore, originating from various species and forming different protein lineages. Wildtype GFP consists of 238 amino acid residues (26.9 kDa). GFP was first identified in the jellyfish *Aequorea victoria*. It emits green light with a peak wavelength of 509 nm upon excitation by blue light at 395 nm. When fused with other proteins, GFP serves as a versatile reporter protein e.g. for quantifying expression levels or facilitates visualization of subcellular localization through fluorescence microscopy. This antibody is a rabbit polyclonal antibody, generated against the full-length eGFP protein. It exhibits reactivity towards variants of *Aequorea victoria* GFP, including S65T-GFP, RS-GFP, YFP, CFP, and eGFP. This antibody is labeled with CoraLite Plus 488.

Storage

Storage:

Store at -20°C. Avoid exposure to light. Stable for one year after shipment.

Storage Buffer:

PBS with 50% Glycerol, 0.05% Proclin300, 0.5% BSA, pH 7.3.

Aliquoting is unnecessary for -20°C storage

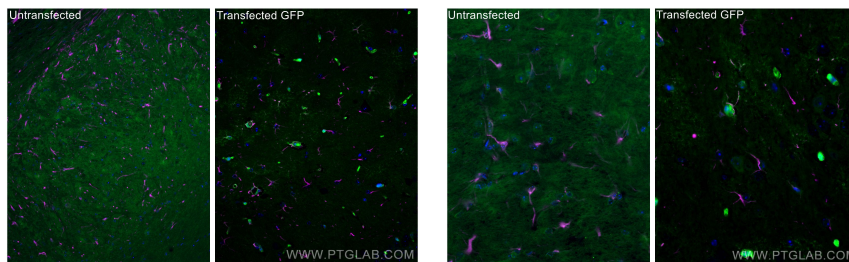
For technical support and original validation data for this product please contact:

T: 1 (888) 4PTGLAB (1-888-478-4522) (toll free
in USA), or 1(312) 455-8498 (outside USA)

E: proteintech@ptglab.com
W: ptglab.com

This product is exclusively available under Proteintech Group brand and is not available to purchase from any other manufacturer.

Selected Validation Data



Immunofluorescent analysis of (4% PFA) fixed paraffin-embedded mouse brain tissue using CoraLite® Plus 488 GFP tag antibody (CL488-50430) at dilution of 1:200, GFAP antibody (60190-1-Ig, Clone: 4B2E10, Magenta). Heat mediated antigen retrieval with Tris-EDTA buffer (pH 9.0).

Immunofluorescent analysis of (4% PFA) fixed paraffin-embedded mouse brain tissue using CoraLite® Plus 488 GFP tag antibody (CL488-50430) at dilution of 1:200, GFAP antibody (60190-1-Ig, Clone: 4B2E10, Magenta). Heat mediated antigen retrieval with Tris-EDTA buffer (pH 9.0).