

For Research Use Only

# CoraLite® Plus 488-conjugated PPP1CB-Specific Polyclonal antibody

Catalog Number:CL488-55136

Featured Product



## Basic Information

### Catalog Number:

CL488-55136

### Size:

100ul , Concentration: 1000 ug/ml by 5500  
Nanodrop;

### Source:

Rabbit

### Isotype:

IgG

### GenBank Accession Number:

NM\_002709

### GeneID (NCBI):

5500

### UNIPROT ID:

P62140

### Full Name:

protein phosphatase 1, catalytic  
subunit, beta isoform

### Calculated MW:

37 kDa

### Observed MW:

33-40 kDa

### Purification Method:

Antigen affinity purification

### Recommended Dilutions:

IF/ICC 1:50-1:500

### Excitation/Emission maxima wavelengths:

493 nm / 522 nm

## Applications

### Tested Applications:

IF/ICC, FC (Intra)

### Species Specificity:

human, mouse, rat

### Positive Controls:

IF/ICC : U2OS cells,

## Background Information

PPP1CB, also named as PP-1B, belongs to the PPP phosphatase family and PP-1 subfamily. Protein phosphatase (PP1) is essential for cell division, it participates in the regulation of glycogen metabolism, muscle contractility and protein synthesis. PPP1CB is involved in regulation of ionic conductances and long-term synaptic plasticity. This antibody is specific to PPP1CB.

## Storage

### Storage:

Store at -20°C. Avoid exposure to light. Stable for one year after shipment.

### Storage Buffer:

PBS with 50% Glycerol, 0.05% Proclin300, 0.5% BSA, pH 7.3.

Aliquoting is unnecessary for -20°C storage

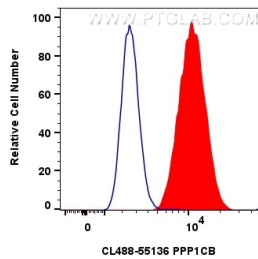
For technical support and original validation data for this product please contact:

T: 1 (888) 4PTGLAB (1-888-478-4522) (toll free  
in USA), or 1(312) 455-8498 (outside USA)

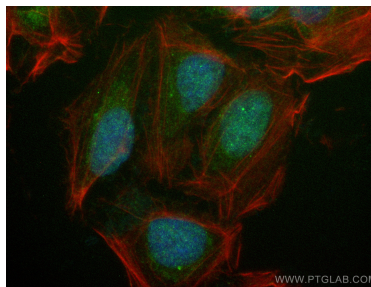
E: [proteintech@ptglab.com](mailto:proteintech@ptglab.com)  
W: [ptglab.com](http://ptglab.com)

This product is exclusively available under Proteintech  
Group brand and is not available to purchase from any  
other manufacturer.

## Selected Validation Data



1x10<sup>6</sup> U2OS cells were intracellularly stained with 0.8 ug Coralite® Plus 488 PPP1CB-Specific Polyclonal Antibody (CL488-55136)(red), or 0.8 ug Coralite® Plus 488-conjugated Rabbit IgG control Rabbit PolyAb (CL488-30000) (blue). Cells were fixed with 4% PFA and permeabilized with Flow Cytometry Perm Buffer (PF00011-C).



Immunofluorescent analysis of (4% PFA) fixed U2OS cells using Coralite® Plus 488 PPP1CB-Specific antibody (CL488-55136) at dilution of 1:200, CL594-Phalloidin (red).