

For Research Use Only

# CoraLite® Plus 488-conjugated ATP1A1-Specific Polyclonal antibody



Catalog Number: CL488-55187

Featured Product

## Basic Information

<b>Catalog Number:</b> CL488-55187	<b>GenBank Accession Number:</b> NM_000701	<b>Purification Method:</b> Antigen affinity purification
<b>Size:</b> 100ul , Concentration: 1000 µg/ml by Nanodrop;	<b>GeneID (NCBI):</b> 476	<b>Recommended Dilutions:</b> IF 1:50-1:500
<b>Source:</b> Rabbit	<b>Full Name:</b> ATPase, Na <sup>+</sup> /K <sup>+</sup> transporting, alpha 1 polypeptide	<b>Excitation/Emission maxima wavelengths:</b> 493 nm / 522 nm
<b>Isotype:</b> IgG	<b>Calculated MW:</b> 113 kDa	
	<b>Observed MW:</b> 100-110 kDa	

## Applications

<b>Tested Applications:</b> FC (Intra), IF	<b>Positive Controls:</b> IF : HEK-293 cells,
<b>Species Specificity:</b> human, mouse	

## Background Information

ATP1A1 is the catalytic component of Na<sup>+</sup>/K<sup>+</sup>-ATPase which is a membrane bound enzyme primarily involved in generation of Na<sup>+</sup> and K<sup>+</sup> gradients across plasma membranes and in determination of cytoplasmic Na<sup>+</sup> levels. ATP1A1 is a ubiquitously expressed membrane protein and often used as the marker or internal control for plasma membrane protein. This antibody is specific to ATP1A1.

## Storage

**Storage:**  
Store at -20°C. Avoid exposure to light. Stable for one year after shipment.  
**Storage Buffer:**  
PBS with 50% Glycerol, 0.05% Proclin300, 0.5% BSA, pH 7.3.  
Aliquoting is unnecessary for -20°C storage

\*\*\* 20ul sizes contain 0.1% BSA

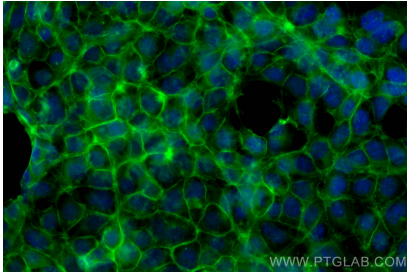
For technical support and original validation data for this product please contact:

T: 1 (888) 4PTGLAB (1-888-478-4522) (toll free  
in USA), or 1(312) 455-8498 (outside USA)

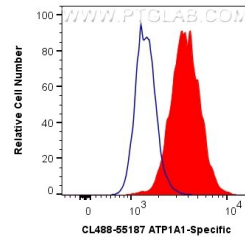
E: proteintech@ptglab.com  
W: ptglab.com

This product is exclusively available under Proteintech Group brand and is not available to purchase from any other manufacturer.

## Selected Validation Data



Immunofluorescent analysis of (-20°C Methanol) fixed HEK-293 cells using CoraLite® Plus 488 ATP1A1-Specific antibody (CL488-55187) at dilution of 1:200.



1X10<sup>6</sup> HEK-293 cells were intracellularly stained with 0.4 ug CoraLite® Plus 488 Anti-Human ATP1A1-Specific (CL488-55187) (red), or 0.4 ug Control Antibody. Cells were fixed with 4% PFA and permeabilized with Flow Cytometry Perm Buffer (PF00011-C).