

For Research Use Only

# CoraLite® Plus 488-conjugated MAT2A Polyclonal antibody

Catalog Number: CL488-55309

Featured Product



## Basic Information

Catalog Number:

CL488-55309

Size:

100ul , Concentration: 1000 ug/ml by Nanodrop;

Source:

Rabbit

Isotype:

IgG

GenBank Accession Number:

NM\_005911

GeneID (NCBI):

4144

UNIPROT ID:

P31153

Full Name:

methionine adenosyltransferase II, alpha

Calculated MW:

44 kDa

Observed MW:

40-45 kDa

Purification Method:

Antigen affinity purification

Recommended Dilutions:

IF/ICC 1:200-1:800

Excitation/Emission maxima wavelengths:

493 nm / 522 nm

## Applications

Tested Applications:

IF/ICC

Species Specificity:

human, mouse

Positive Controls:

IF/ICC : HeLa cells,

## Background Information

MAT2A, also named as AMS2, MATA2 and AdoMet synthase 2, belongs to the AdoMet synthase family. It catalyzes the formation of S-adenosylmethionine from methionine and ATP. This antibody is specific to MATA2.

## Storage

Storage:

Store at -20°C. Avoid exposure to light. Stable for one year after shipment.

Storage Buffer:

PBS with 50% Glycerol, 0.05% Proclin300, 0.5% BSA, pH 7.3.

Aliquoting is unnecessary for -20°C storage

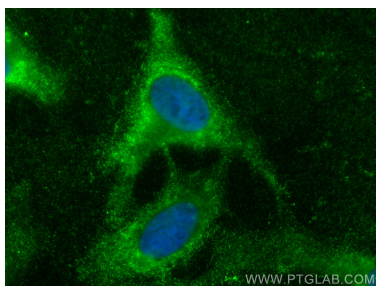
For technical support and original validation data for this product please contact:

T: 1 (888) 4PTGLAB (1-888-478-4522) (toll free in USA), or 1(312) 455-8498 (outside USA)

E: [proteintech@ptglab.com](mailto:proteintech@ptglab.com)  
W: [ptglab.com](http://ptglab.com)

This product is exclusively available under Proteintech Group brand and is not available to purchase from any other manufacturer.

## Selected Validation Data



Immunofluorescent analysis of (-20°C Methanol) fixed HeLa cells using CoraLite® Plus 488 MAT2A antibody (CL488-55309) at dilution of 1:200.