

For Research Use Only

CoraLite® Plus 488-conjugated SH2D5 Polyclonal antibody

Catalog Number: CL488-55320



Basic Information

Catalog Number:

CL488-55320

Size:

100ul , Concentration: 1000 ug/ml by Nanodrop;

Source:

Rabbit

Isotype:

IgG

GenBank Accession Number:

NM_001103160

GeneID (NCBI):

400745

UNIPROT ID:

Q6ZV89

Full Name:

SH2 domain containing 5

Calculated MW:

37 kDa

Observed MW:

43-47 kDa

Purification Method:

Antigen Affinity Purified

Recommended Dilutions:

IF/ICC 1:50-1:500

Excitation/Emission maxima wavelengths:

493 nm / 522 nm

Applications

Tested Applications:

IF/ICC

Species Specificity:

human, mouse

Positive Controls:

IF/ICC : HEK-293 cells,

Background Information

SH2D5, or Src homology 2 domain-containing protein 5, is a mammalian-specific adaptor-like protein that contains an N-terminal phosphotyrosine-binding domain and a C-terminal Src homology 2 (SH2) domain. SH2D5 has been found to interact with the breakpoint cluster region protein, a RacGAP that is also highly expressed in the brain. This interaction occurs between the phosphotyrosine-binding domain of SH2D5 and an NxxF motif located within the N-terminal region of the breakpoint cluster region. Furthermore, SH2D5 has been implicated in the regulation of cell growth in hepatocellular carcinoma cells, where it binds to transketolase (TKT) and promotes the activity of STAT3, a key transcription factor involved in cell proliferation and survival.

Storage

Storage:

Store at -20°C. Avoid exposure to light. Stable for one year after shipment.

Storage Buffer:

PBS with 50% Glycerol, 0.05% Proclin300, 0.5% BSA, pH 7.3.

Aliquoting is unnecessary for -20°C storage

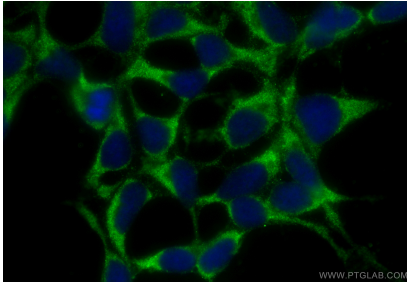
For technical support and original validation data for this product please contact:

T: 1 (888) 4PTGLAB (1-888-478-4522) (toll free in USA), or 1(312) 455-8498 (outside USA)

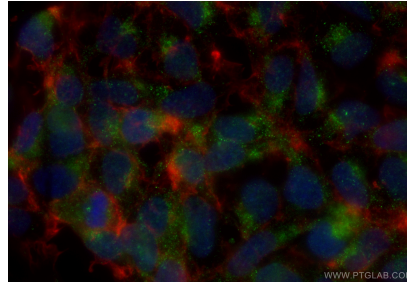
E: proteintech@ptglab.com
W: ptglab.com

This product is exclusively available under Proteintech Group brand and is not available to purchase from any other manufacturer.

Selected Validation Data



Immunofluorescent analysis of (-20°C Ethanol) fixed HEK-293 cells using CoraLite® Plus 488 SH2D5 antibody (CL488-55320) at dilution of 1:200.



Immunofluorescent analysis of (4% PFA) fixed HEK-293 cells using CoraLite® Plus 488 SH2D5 antibody (CL488-55320) at dilution of 1:200, CL594-Phalloidin (red).