

For Research Use Only

CoraLite® Plus 488-conjugated Rootletin Polyclonal antibody

Catalog Number: CL488-55485



Basic Information

Catalog Number:

CL488-55485

Size:

100ul , Concentration: 1000 ug/ml by Nanodrop;

Source:

Rabbit

Isotype:

IgG

GenBank Accession Number:

NM_014675

GeneID (NCBI):

9696

UNIPROT ID:

Q5TZA2

Full Name:

ciliary rootlet coiled-coil, rootletin

Calculated MW:

229 kDa

Observed MW:

228 kDa

Purification Method:

Antigen Affinity Purified

Recommended Dilutions:

IF/ICC 1:50-1:500

Excitation/Emission maxima wavelengths:

493 nm / 522 nm

Applications

Tested Applications:

IF/ICC

Species Specificity:

human, mouse

Positive Controls:

IF/ICC : hTERT-RPE1 cells,

Background Information

Rootletin is predicted to enable kinesin binding activity and structural molecule activity. Involved in several processes, including centriole-centriole cohesion; positive regulation of cilium assembly; and positive regulation of protein localization to cilium.

Storage

Storage:

Store at -20°C. Avoid exposure to light. Stable for one year after shipment.

Storage Buffer:

PBS with 50% Glycerol, 0.05% Proclin300, 0.5% BSA, pH 7.3.

Aliquoting is unnecessary for -20°C storage

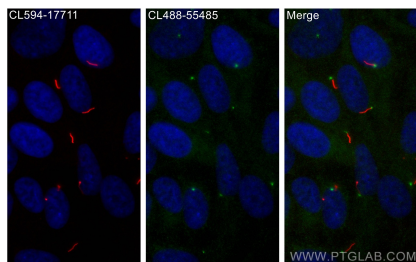
For technical support and original validation data for this product please contact:

T: 1 (888) 4PTGLAB (1-888-478-4522) (toll free in USA), or 1(312) 455-8498 (outside USA)

E: proteintech@ptglab.com
W: ptglab.com

This product is exclusively available under Proteintech Group brand and is not available to purchase from any other manufacturer.

Selected Validation Data



Immunofluorescent analysis of (4% PFA) fixed hTERT-RPE1 cells using CoraLite® Plus 488 Rootletin antibody (CL488-55485) at dilution of 1:200, CoraLite® 594 ARL13B antibody (CL594-17711, red).