

For Research Use Only

CoraLite® Plus 488-conjugated TGFBI / BIGH3 Monoclonal antibody

Catalog Number: CL488-60007

Featured Product

1 Publications



Basic Information

Catalog Number:

CL488-60007

Size:

100ul, Concentration: 1000 ug/ml by Nanodrop;

Source:

Mouse

Isotype:

IgG2a

Immunogen Catalog Number:

AG0241

GenBank Accession Number:

BC000097

GeneID (NCBI):

7045

ENSEMBL Gene ID:

ENSG00000120708

UNIPROT ID:

Q15582

Full Name:

transforming growth factor, beta-induced, 68kDa

Calculated MW:

683 aa, 75 kDa

Purification Method:

Protein A purification

CloneNo.:

3E11D11

Recommended Dilutions:

IF-P 1:50-1:500

Excitation/Emission maxima wavelengths:

493 nm / 522 nm

Applications

Tested Applications:

IF-P, FC (Intra)

Species Specificity:

human

Positive Controls:

IF-P: human colon cancer tissue,

Background Information

TGFBI, also named as BIGH3, Kerato-epithelin and RGD-CAP, binds to type I, II, and IV collagens. TGFBI is an adhesion protein which may play an important role in cell-collagen interactions. In cartilage, it may be involved in endochondral bone formation. TGFBI is an extracellular matrix adaptor protein, it has been reported to be differentially expressed in transformed tissues. TGFBI is a predictive factor of the response to chemotherapy, and suggest the use of TGFBI-derived peptides as possible therapeutic adjuvants for the enhancement of responses to chemotherapy.(PMID:20509890) Defects in TGFBI are the cause of epithelial basement membrane corneal dystrophy (EBMD). Defects in TGFBI are the cause of corneal dystrophy Groenouw type 1 (CDGG1). Defects in TGFBI are the cause of corneal dystrophy lattice type 1 (CDL1). Defects in TGFBI are a cause of corneal dystrophy Thiel-Behnke type (CDTB). Defects in TGFBI are the cause of Reis-Buecklers corneal dystrophy (CDRB). Defects in TGFBI are the cause of lattice corneal dystrophy type 3A (CDL3A). Defects in TGFBI are the cause of Avellino corneal dystrophy (ACD).

Notable Publications

Author	Pubmed ID	Journal	Application
Indranil Paul	36755019	Nat Commun	

Storage

Storage:

Store at -20°C. Avoid exposure to light. Stable for one year after shipment.

Storage Buffer:

PBS with 50% Glycerol, 0.05% Proclin300, 0.5% BSA, pH 7.3.

Aliquoting is unnecessary for -20°C storage

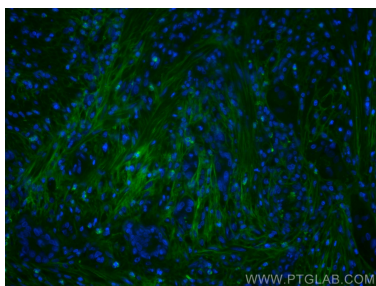
For technical support and original validation data for this product please contact:

T: 1 (888) 4PTGLAB (1-888-478-4522) (toll free in USA), or 1(312) 455-8498 (outside USA)

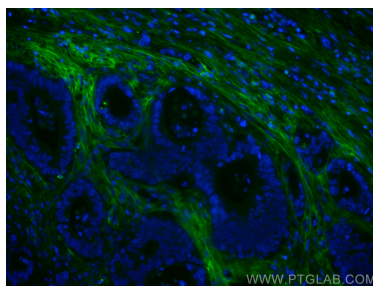
E: proteintech@ptglab.com
W: ptglab.com

This product is exclusively available under Proteintech Group brand and is not available to purchase from any other manufacturer.

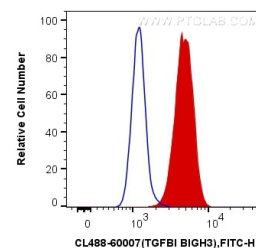
Selected Validation Data



Immunofluorescent analysis of (4% PFA) fixed human colon cancer tissue using CoraLite® Plus 488 TGFBI / BIGH3 antibody (CL488-60007, Clone: 3E11D11) at dilution of 1:200.



Immunofluorescent analysis of (4% PFA) fixed human colon cancer tissue using CoraLite® Plus 488 TGFBI / BIGH3 antibody (CL488-60007, Clone: 3E11D11) at dilution of 1:200.



1X10⁶ Y79 cells were intracellularly stained with 0.4 ug CoraLite® Plus 488 Anti-Human TGFBI / BIGH3 (CL488-60007, Clone:3E11D11) (red), or 0.4 ug Control Antibody. Cells were fixed with 4% PFA and permeabilized with Flow Cytometry Perm Buffer (PF00011-C).