

For Research Use Only

# CoraLite® Plus 488-conjugated EMILIN1 Monoclonal antibody

Catalog Number:CL488-60047



## Basic Information

Catalog Number:	GenBank Accession Number:	Purification Method:
CL488-60047	BC007530	Protein G purification
Size:	GeneID (NCBI):	CloneNo.:
100ul , Concentration: 1000 ug/ml by Nanodrop;	11117	2A5C8
Source:	UNIPROT ID:	Recommended Dilutions:
Mouse	Q9Y6C2	IF-P 1:50-1:500
Isotype:	Full Name:	Excitation/Emission maxima wavelengths:
IgG1	elastin microfibril interacer 1	493 nm / 522 nm
Immunogen Catalog Number:	Calculated MW:	
AG1016	107 kDa	
	Observed MW:	
	120-130 kDa	

## Applications

Tested Applications:	Positive Controls:
IF-P	IF-P : human ovary tumor tissue,
Species Specificity:	
human	

## Background Information

EMILIN1, also named as EMILIN, EMILIN-1, gp115 and EMI, may be responsible for anchoring smooth muscle cells to elastic fibers, and may be involved not only in the formation of the elastic fiber, but also in the processes that regulate vessel assembly. It has cell adhesive capacity. EMILIN1 is a negative regulator of the transforming growth factor-beta (TGF-beta) signaling, which is involved in blood pressure (BP) homeostasis (PMID:20186130). EMILIN1 may play a key role in hypertensive vascular remodeling. TGFβ proteins are the main regulators of blood vessel development and maintenance, and EMILIN1 inhibits TGFβ signaling by binding specifically to the proTGFβ precursor and preventing its maturation by furin convertases in the extracellular space (PMID:19922630).

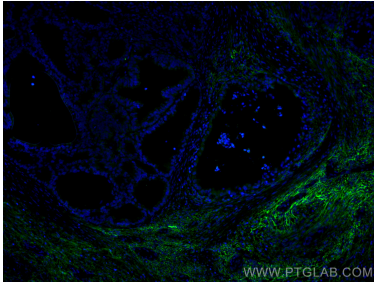
## Storage

**Storage:**  
Store at -20°C. Avoid exposure to light. Stable for one year after shipment.  
**Storage Buffer:**  
PBS with 50% Glycerol, 0.05% Proclin300, 0.5% BSA, pH 7.3.  
**Aliquoting is unnecessary for -20° C storage**

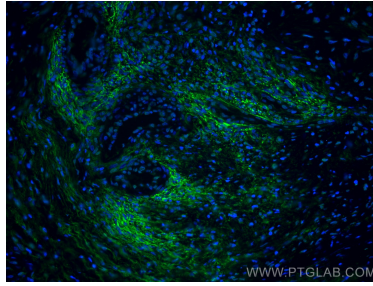
For technical support and original validation data for this product please contact:  
T: 1 (888) 4PTGLAB (1-888-478-4522) (toll free in USA), or 1(312) 455-8498 (outside USA)  
E: [proteintech@ptglab.com](mailto:proteintech@ptglab.com)  
W: [ptglab.com](http://ptglab.com)

This product is exclusively available under Proteintech Group brand and is not available to purchase from any other manufacturer.

## Selected Validation Data



Immunofluorescent analysis of (4% PFA) fixed human ovary tumor tissue using CoraLite® Plus 488 EMILIN1 antibody (CL488-60047, Clone: 2A5C8 ) at dilution of 1:200.



Immunofluorescent analysis of (4% PFA) fixed human ovary tumor tissue using CoraLite® Plus 488 EMILIN1 antibody (CL488-60047, Clone: 2A5C8 ) at dilution of 1:200.