

For Research Use Only

# CoraLite® Plus 488-conjugated STOML2 Monoclonal antibody

Catalog Number: CL488-60052

Featured Product



## Basic Information

### Catalog Number:

CL488-60052

### GenBank Accession Number:

BC002442

### Purification Method:

Protein A purification

### Size:

100ul , Concentration: 1000 ug/ml by 30968

### GeneID (NCBI):

30968

### CloneNo.:

1A2E9

Nanodrop;

### UNIPROT ID:

Q9UJZ1

### Excitation/Emission maxima wavelengths:

493 nm / 522 nm

### Source:

Mouse

### Full Name:

stomatin (EPB72)-like 2

### Isotype:

IgG2b

### Calculated MW:

356 aa, 39 kDa

### Immunogen Catalog Number:

AG0363

### Observed MW:

39 kDa

## Applications

### Tested Applications:

FC (Intra)

### Species Specificity:

human, mouse, rat, pig

## Background Information

Human stomatin (band 7.2b) is a 31-kDa erythrocyte membrane protein of unknown function but implicated in the control of ion channel permeability, mechanoreception, and lipid domain organization. Stomatin (EPB72)-like 2 (STOML2, synonyms: SLP-2, HSPC108) is a 38.5-kDa protein that is overall approximately 20% similar to human stomatin. STOML2 is also present in mature human erythrocytes, but lacks a characteristic NH(2)-terminal hydrophobic domain found in other stomatin homologues. STOML2 may link stomatin or other integral membrane proteins to the peripheral cytoskeleton and thereby play a role in regulating ion channel conductances or the organization of sphingolipid and cholesterol-rich lipid rafts.

## Storage

### Storage:

Store at -20°C. Avoid exposure to light. Stable for one year after shipment.

### Storage Buffer:

PBS with 50% Glycerol, 0.05% Proclin300, 0.5% BSA, pH 7.3.

Aliquoting is unnecessary for -20°C storage

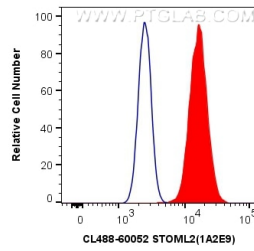
For technical support and original validation data for this product please contact:

T: 1 (888) 4PTGLAB (1-888-478-4522) (toll free in USA), or 1(312) 455-8498 (outside USA)

E: [proteintech@ptglab.com](mailto:proteintech@ptglab.com)  
W: [ptglab.com](http://ptglab.com)

This product is exclusively available under Proteintech Group brand and is not available to purchase from any other manufacturer.

## Selected Validation Data



1X10<sup>6</sup> HeLa cells were intracellularly stained with 0.4 ug CoraLite® Plus 488 Anti-Human STOML2 (CL488-60052, Clone:1A2E9) (red), or 0.4 ug Mouse IgG2b Isotype Control (CL488-66360-3, Clone: K11B8C4B5) (blue). Cells were fixed with 4% PFA and permeabilized with Flow Cytometry Perm Buffer (PF00011-C).