

# CoraLite® Plus 488-conjugated BORIS Monoclonal antibody

Catalog Number: **CL488-60079**

## Basic Information

<b>Catalog Number:</b> CL488-60079	<b>GenBank Accession Number:</b> BC130486	<b>Purification Method:</b> Protein G purification
<b>Size:</b> 100ul , Concentration: 1000 µg/ml by Nanodrop;	<b>GeneID (NCBI):</b> 140690	<b>CloneNo.:</b> 2B12E2
<b>Source:</b> Mouse	<b>Full Name:</b> CCCTC-binding factor (zinc finger protein)-like	<b>Recommended Dilutions:</b> IF 1:200-1:800
<b>Isotype:</b> IgG1	<b>Calculated MW:</b> 82 kDa, 75 kDa	<b>Excitation/Emission maxima wavelengths:</b> 488 nm / 515 nm
<b>Immunogen Catalog Number:</b> AG1003	<b>Observed MW:</b> 75 kDa	

## Applications

<b>Tested Applications:</b> IF	<b>Positive Controls:</b> IF : HeLa cells,
<b>Species Specificity:</b> human, mouse	

## Background Information

CTCF, also named BORIS (for brother of the regulator of imprinted sites) is a paralogue of the 11 zinc-finger transcription factor, CTCF. It is predominantly expressed in spermatocytes in the testis, also can be found in tumors and cancer cell lines. It mainly participates in insulator function, nuclear architecture and transcriptional control, which probably acts by recruiting epigenetic chromatin modifiers. It has a key role in gene imprinting in male germline, by participating in the establishment of differential methylation at the IGF2/H19 imprinted control region (ICR). Directly binds the unmethylated H19 ICR and recruits the PRMT7 methyltransferase, leading to methylate histone H4 'Arg-3' to form H4R3me2.

## Storage

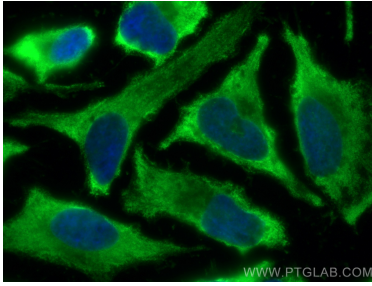
**Storage:**  
Store at -20°C. Avoid exposure to light. Stable for one year after shipment.  
**Storage Buffer:**  
PBS with 50% Glycerol, 0.05% Proclin300, 0.5% BSA, pH 7.3.  
 Aliquoting is unnecessary for -20°C storage

\*\*\* 20ul sizes contain 0.1% BSA

For technical support and original validation data for this product please contact:  
 T: 1 (888) 4PTGLAB (1-888-478-4522) (toll free in USA), or 1(312) 455-8498 (outside USA)  
 E: [proteintech@ptglab.com](mailto:proteintech@ptglab.com)  
 W: [ptglab.com](http://ptglab.com)

This product is exclusively available under Proteintech Group brand and is not available to purchase from any other manufacturer.

## Selected Validation Data



Immunofluorescent analysis of (-20°C Ethanol) fixed HeLa cells using CoraLite® Plus 488 BORIS antibody (CL488-60079, Clone: 2B12E2 ) at dilution of 1:400.