

For Research Use Only

CoraLite® Plus 488-conjugated SERPINA10 Monoclonal antibody



Catalog Number:CL488-60113

Basic Information

Catalog Number: CL488-60113	GenBank Accession Number: BC022261	Purification Method: Protein A purification
Size: 100ul , Concentration: 1000 µg/ml by Nanodrop;	GeneID (NCBI): 51156	CloneNo.: 5B3C9
Source: Mouse	Full Name: serpin peptidase inhibitor, clade A (alpha-1 antiproteinase, antitrypsin), member 10	Recommended Dilutions: IF 1:50-1:500
Isotype: IgG2a	Calculated MW: 444 aa, 51 kDa	Excitation/Emission maxima wavelengths: 493 nm / 522 nm
Immunogen Catalog Number: AG2420		

Applications

Tested Applications: IF	Positive Controls: IF : HepG2 cells,
Species Specificity: human, rat, pig	

Background Information

SERPINA10 belongs to the serpin family. It is predominantly expressed in the liver and secreted in plasma. It inhibits the activity of coagulation factors Xa and XIa in the presence of protein Z, calcium and phospholipid. Mutations in this gene are associated with venous thrombosis.

Storage

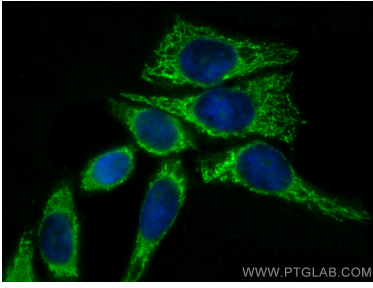
Storage:
Store at -20°C. Avoid exposure to light. Stable for one year after shipment.
Storage Buffer:
PBS with 50% Glycerol, 0.05% Proclin300, 0.5% BSA, pH 7.3.
Aliquoting is unnecessary for -20°C storage

*** 20ul sizes contain 0.1% BSA

For technical support and original validation data for this product please contact:
T: 1 (888) 4PTGLAB (1-888-478-4522) (toll free in USA), or 1(312) 455-8498 (outside USA) E: proteintech@ptglab.com W: ptglab.com

This product is exclusively available under Proteintech Group brand and is not available to purchase from any other manufacturer.

Selected Validation Data



Immunofluorescent analysis of (-20°C Ethanol)
fixed HepG2 cells using CoraLite® Plus 488
SERPINA10 antibody (CL488-60113, Clone: 5B3C9)
at dilution of 1:200.